

A70 HALF PITCH SHROUDED HEADER IDC TYPE

PITCH: 1.27mm * 1.27mm

SPECIFICATIONS

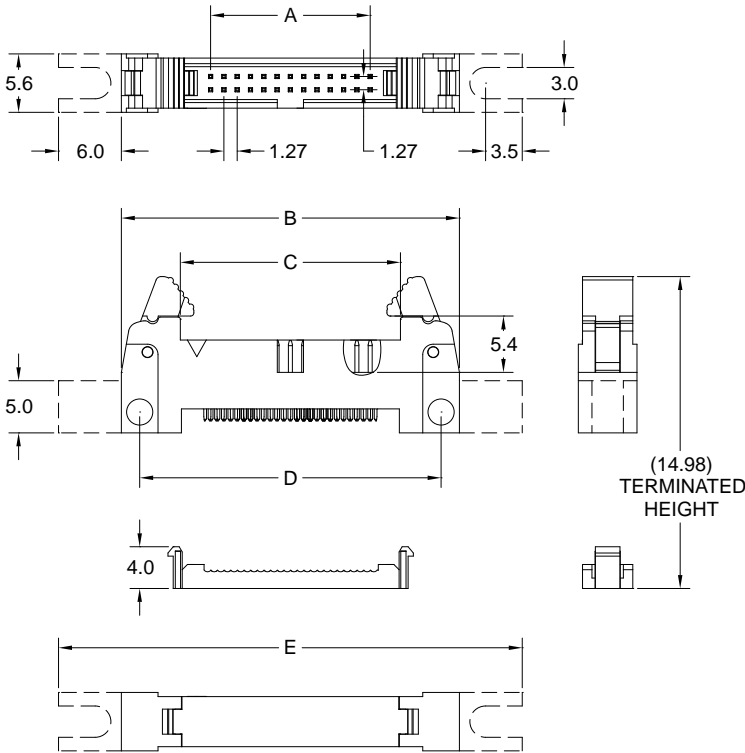
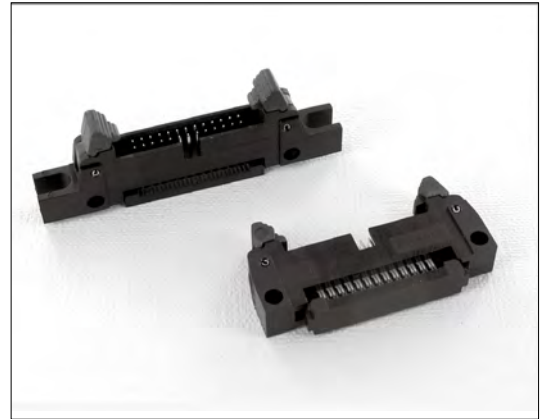
Material

Insulator : PBT, glass reinforced, rated UL 94V-0
Contact : Phosphor Bronze

Electrical

Current Rating : 1 Amp
Contact Resistance : 30 mΩ max.
Insulation Resistance : 1000 MΩ min.
Dielectric Withstanding Voltage : 250V AC for 1minute
Operating Temperature : -40°C to +105°C

- ▶ Terminated with L03-0.635mm pitch flat ribbon cable.
- ▶ Mating Suggestion : A32, A32c & A52 series.



POSITION	A	B	C	D	E
6	2.54	19.58	8.32	16.08	31.58
8	3.81	20.85	9.59	17.35	32.85
10	5.08	22.12	10.86	18.62	34.12
12	6.35	23.39	12.13	19.89	35.39
14	7.62	24.66	13.40	21.16	36.66
16	8.89	25.93	14.67	22.43	37.93
20	11.43	28.47	17.21	24.97	40.47
22	12.70	29.74	18.48	26.24	41.74
26	15.24	32.28	21.02	28.78	44.28
30	17.78	34.82	23.56	31.32	46.82
34	20.32	37.36	26.10	33.86	49.36
40	24.13	41.17	29.91	37.67	53.17
44	26.67	43.71	32.45	40.21	55.71
50	30.48	47.52	36.26	44.02	59.52
60	36.83	53.87	42.61	50.37	65.87
68	41.91	58.95	47.69	55.45	70.95
80	49.53	66.57	55.31	63.07	78.57



How to order: A70 - 1 - 2 - 3 - 4 - 5 - G(RoHS)

1.NO. OF CONTACT	2.CONTACT MATERIAL	3.CONTACT PLATING	4.SPECIAL FUNCTION	5.INSULATOR COLOR
06 08 10 12 14 16 20 22 26 30 34 40 44 50 60 68 80	B: PHOSPHOR BRONZE	T: TIN PLATED S: SELECTIVE G: GOLD FLASH A: 5u" INCH GOLD B: 10u" INCH GOLD C: 15u" INCH GOLD D: 30u" INCH GOLD	A: W EAR B: W/O EAR	1. BLACK