

A54a SINGLE ROW HALF PITCH DIP PLUG

PITCH: 1.27mm

SPECIFICATIONS

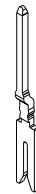
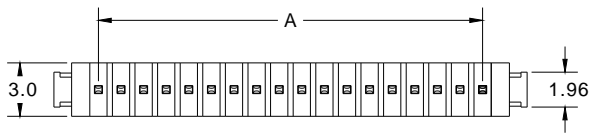
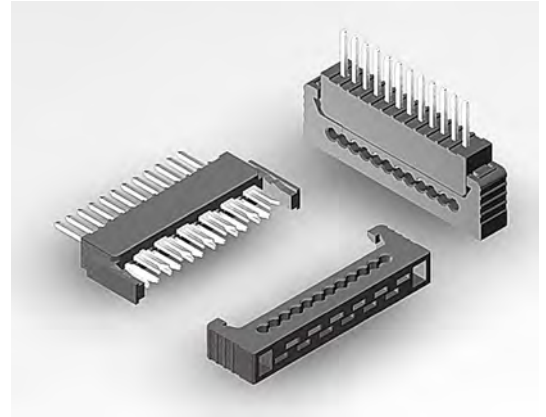
Material

Insulator : LCP, glass reinforced, rated UL 94V-0
 Contact : Phosphor Bronze

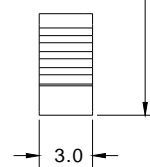
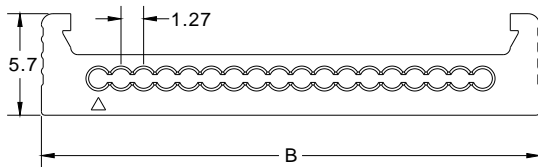
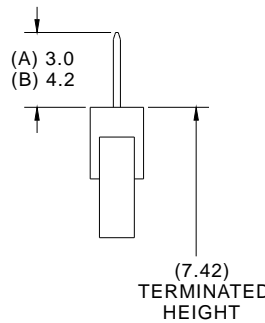
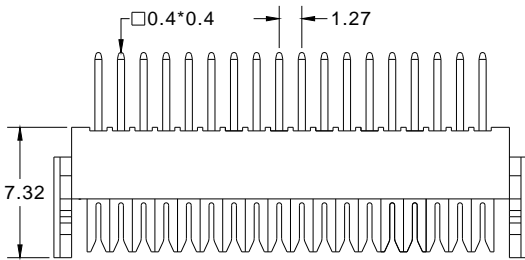
Electrical

Current Rating : 1 Amp
 Contact Resistance : 30 mΩ max.
 Insulation Resistance : 1000 MΩ min.
 Dielectric Withstanding Voltage : 250V AC for 1minute
 Operating Temperature : -40°C to +105°C

► Terminated with L01-1.27mm (26AWG) pitch flat ribbon cable.



POSITION	A	B
2	1.27	7.68
3	2.54	8.95
4	3.81	10.22
5	5.08	11.49
6	6.35	12.76
7	7.62	14.03
8	8.89	15.30
9	10.16	16.57
10	11.43	17.84
11	12.70	19.11
12	13.97	20.38
13	15.24	21.65
14	16.51	22.92
15	17.78	24.19
16	19.05	25.46
17	20.32	26.73
18	21.59	28.00
19	22.86	29.27
20	24.13	30.54



How to order: A54a - 1 - 2 - 3 - 4 - 5 - G(RoHS)

1.NO. OF CONTACT	2.CONTACT MATERIAL	3.CONTACT PLATING	4.PIN LENGTH	5.INSULATOR COLOR
02 03 04 05 06 07 08 09 10 11 12 13 14 15 16 17 18 19 20	B: PHOSPHOR BRONZE	T: TIN PLATED S: SELECTIVE G: GOLD FLASH A: 5u" INCH GOLD B: 10u" INCH GOLD C: 15u" INCH GOLD D: 30u" INCH GOLD	A: 3.0mm B: 4.2mm	1. BLACK

