

A06 FINE PITCH IDC SOCKET WITH STEEL LATCH

PITCH: 1.27mm * 2.54mm

SPECIFICATIONS

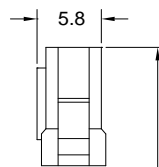
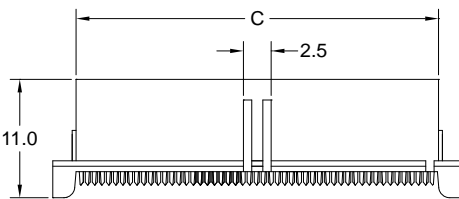
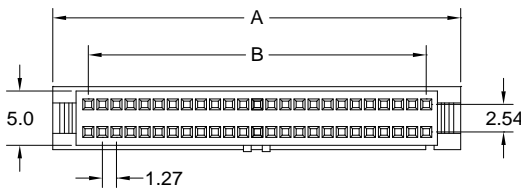
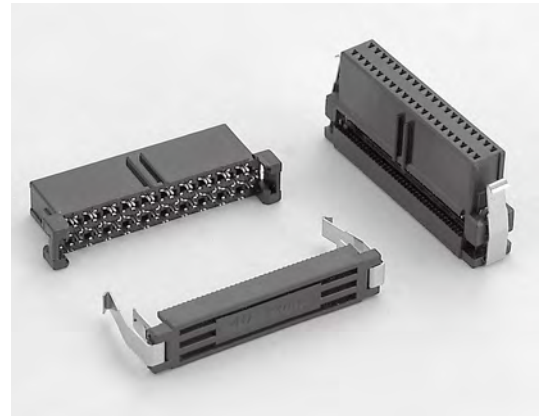
Material

Insulator : PBT, glass reinforced, rated UL 94V-0
 Contact : Phosphor Bronze

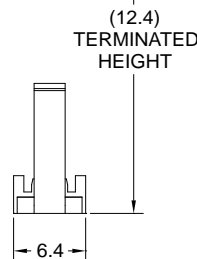
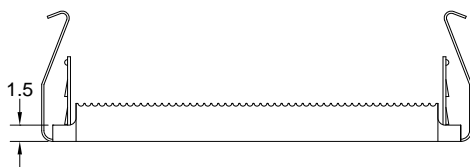
Electrical

Current Rating : 1 Amp
 Contact Resistance : 30 mΩ max.
 Insulation Resistance : 1000 MΩ min.
 Dielectric Withstanding Voltage : 250V AC for 1minute
 Operating Temperature : -40°C to +105°C

- ▶ Terminated with L03-0.635mm pitch flat ribbon cable.
- ▶ Mating Suggestion : C55, C55a & C55b series.



POSITION	A	B	C
10	11.43	5.08	7.43
14	13.97	7.62	9.97
16	15.24	8.89	11.24
20	17.78	11.43	13.78
24	20.32	13.97	16.32
26	21.59	15.24	17.59
30	24.13	17.78	20.13
34	26.67	20.32	22.67
40	30.48	24.13	26.48
44	33.02	26.67	29.02
50	36.83	30.48	32.83
60	43.18	36.83	39.18
64	45.72	39.37	41.72
68	48.26	41.91	44.26
72	50.80	44.45	46.80
80	55.88	49.53	51.88
100	68.58	62.23	64.58



How to order: A06 - 1 - 2 - 3 - 4 - 5 - G(RoHS)

1.NO. OF CONTACT	2.CONTACT MATERIAL	3.CONTACT PLATING	4.SPECIAL FUNCTION	5.INSULATOR COLOR
10 14 16 20 24 26 30 34 40 44 50 60 64 68 72 80 100	B: PHOSPHOR BRONZE	T: TIN PLATED S: SELECTIVE G: GOLD FLASH A: 5u" INCH GOLD B: 10u" INCH GOLD C: 15u" INCH GOLD D: 30u" INCH GOLD	B: W/O STRAIN RELIEF W BAR	1. BLACK



DON CONNEX
ELECTRONICS CO., LTD

T:886 2 86483356 | F:886 2 86485885
e-mail: info@donconnex.com.tw



Connector: E163339 | Flat cable: E162690
Wiring Harnesses: E312257