

# A06b SHRUNK FINE PITCH IDC SOCKET

**PITCH: 1.27mm \* 2.54mm**

## SPECIFICATIONS

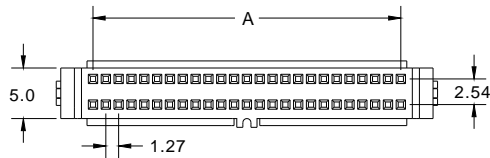
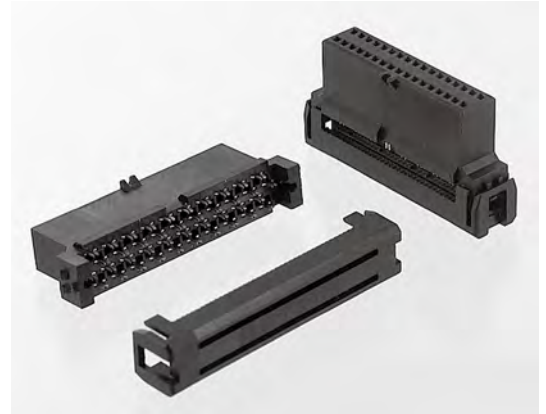
### Material

Insulator : PBT, glass reinforced, rated UL 94V-0  
 Contact : Phosphor Bronze

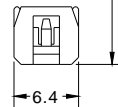
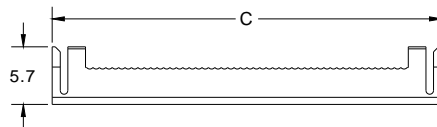
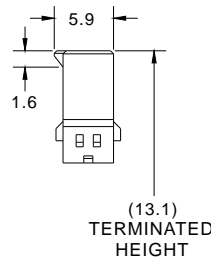
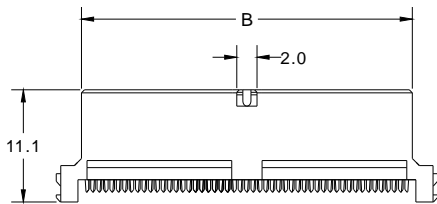
### Electrical

Current Rating : 1 Amp  
 Contact Resistance : 30 mΩ max.  
 Insulation Resistance : 1000 MΩ min.  
 Dielectric Withstanding Voltage : 250V AC for 1minute  
 Operating Temperature : -40°C to +105°C

- ▶ Terminated with L03-0.635mm pitch flat ribbon cable.
- ▶ Mating Suggestion : C66, C67 & C68 series.



POSITION	A	B	C
10	5.08	7.36	13.16
20	11.43	13.71	19.51
26	15.24	17.52	23.32
30	17.78	20.06	25.86
34	20.32	22.60	28.40
40	24.13	26.41	32.21
50	30.48	32.76	38.56
60	36.83	39.11	44.91
68	41.91	44.19	49.99
80	49.53	51.81	57.61
100	62.23	64.51	70.31



**How to order:** A06b - 1 - 2 - 3 - 4 - 5 - G(RoHS)

1.NO. OF CONTACT	2.CONTACT MATERIAL	3.CONTACT PLATING	4.SPECIAL FUNCTION	5.INSULATOR COLOR
10 20 26 30 34 40 50 60 68 80 100	B: PHOSPHOR BRONZE	T: TIN PLATED S: SELECTIVE G: GOLD FLASH A: 5u" INCH GOLD B: 10u" INCH GOLD C: 15u" INCH GOLD D: 30u" INCH GOLD	B: W/O STRAIN RELIEF W BAR	1. BLACK

