

A15b FINE PITCH DIP PLUG

PITCH: 1.27mm * 2.54mm

SPECIFICATIONS

Material

Insulator : PBT, glass reinforced, rated UL 94V-0

Contact : Phosphor Bronze

Electrical

Current Rating : 1 Amp

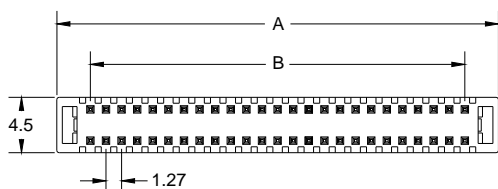
Contact Resistance : 30 mΩ max.

Insulation Resistance : 1000 MΩ min.

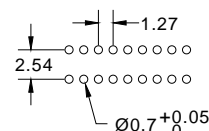
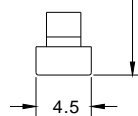
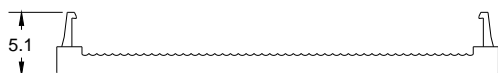
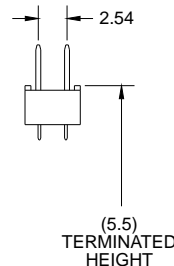
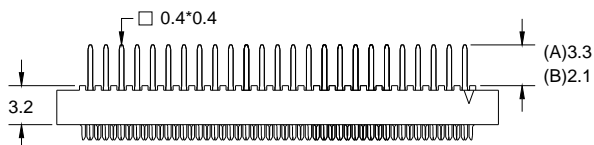
Dielectric Withstanding Voltage : 250V AC for 1minute

Operating Temperature : -40°C to +105°C

► Terminated with L03-0.635mm pitch flat ribbon cable.



POSITION	A	B
10	10.55	5.08
14	13.09	7.62
16	14.36	8.89
20	16.90	11.43
26	20.71	15.24
30	23.25	17.78
34	25.79	20.32
40	29.60	24.13
50	35.95	30.48
60	42.30	36.83
68	47.38	41.91
70	48.65	43.18
80	55.00	49.53
90	61.35	55.88
100	67.70	62.23



RECOMMENDED P.C.B. LAYOUT

How to order: A15b - 1 - 2 - 3 - 4 - 5 - G(RoHS)

1.NO. OF CONTACT	2.CONTACT MATERIAL	3.CONTACT PLATING	4.PIN LENGTH	5.INSULATOR COLOR
10 14 16 20 26 30 34 40 50 60 68 70 80 90 100	B: PHOSPHOR BRONZE	T: TIN PLATED S: SELECTIVE G: GOLD FLASH A: 5u" INCH GOLD B: 10u" INCH GOLD C: 15u" INCH GOLD D: 30u" INCH GOLD	A: 3.3mm B: 2.1mm	1. BLACK



DON CONNEX
ELECTRONICS CO., LTD

T:886 2 86483356 | F:886 2 86485885
e-mail:info@donconnex.com.tw



Connector:E163339 | Flat cable:E162690
Wiring Harnesses:E312257