

A05d IDC SOCKET WITH FRICTION LATCH BUMP

PITCH: 2.0mm * 2.0mm

SPECIFICATIONS

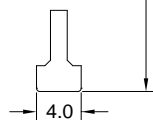
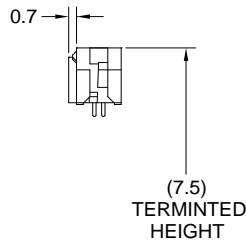
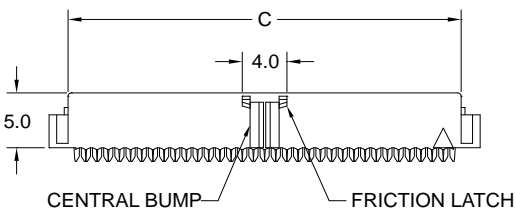
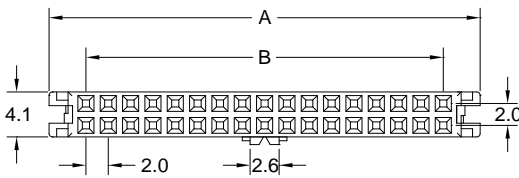
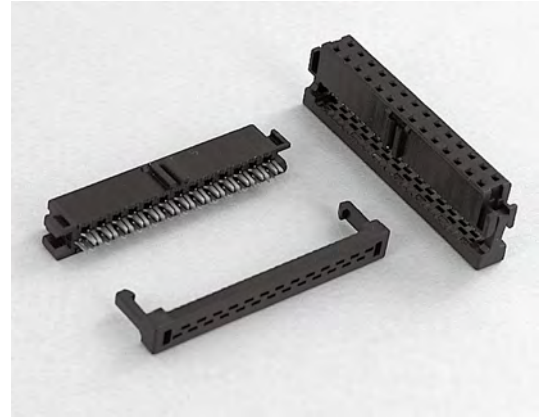
Material

Insulator : PBT, glass reinforced, rated UL 94V-0
 Contact : Phosphor Bronze

Electrical

Current Rating : 1 Amp
 Contact Resistance : 30 mΩ max.
 Insulation Resistance : 3000 MΩ min.
 Dielectric Withstanding Voltage : 500V AC for 1minute
 Operating Temperature : -40°C to +105°C

- ▶ Terminated with L02-1.00mm pitch flat ribbon cable.
- ▶ Mating Suggestion : A38b, C71, C72 & C73 series.



POSITION	A	B	C
6	10.6	4.0	7.2
8	12.6	6.0	9.2
10	14.6	8.0	11.2
12	16.6	10.0	13.2
14	18.6	12.0	15.2
16	20.6	14.0	17.2
18	22.6	16.0	19.2
20	24.6	18.0	21.2
22	26.6	20.0	23.2
24	28.6	22.0	25.2
26	30.6	24.0	27.2
28	32.6	26.0	29.2
30	34.6	28.0	31.2
34	38.6	32.0	35.2
36	40.6	34.0	37.2
40	44.6	38.0	41.2
44	48.6	42.0	45.2
48	52.6	46.0	49.2
50	54.6	48.0	51.2
60	64.6	58.0	61.2
64	68.6	62.0	65.2
68	72.6	66.0	69.2

How to order: A05d - 1 - 2 - 3 - 4 - 5 - G(RoHS)

1.NO. OF CONTACT	2.CONTACT MATERIAL	3.CONTACT PLATING	4.SPECIAL FUNCTION	5.INSULATOR COLOR
06 08 10 12 14 16 18 20 22 24 26 28 30 34 36 40 44 48 50 60 64 68	B: PHOSPHOR BRONZE	T: TIN PLATED S: SELECTIVE G: GOLD FLASH A: 5u" INCH GOLD B: 10u" INCH GOLD C: 15u" INCH GOLD D: 30u" INCH GOLD	A: WITH CENTRAL BUMP WITH FRICTION LATCH B: WITH CENTRAL BUMP W/O FRICTION LATCH C: W/O CENTRAL BUMP W/O FRICTION LATCH	1. BLACK



DON CONNEX
ELECTRONICS CO., LTD

T:886 2 86483356 | F:886 2 86485885
e-mail:info@donconnex.com.tw



Connector:E163339 | Flat cable:E162690
Wiring Harnesses:E312257