

# A11a DIP PLUG

**PITCH: 2.0mm \* 2.0mm**

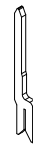
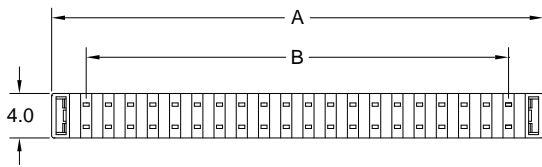
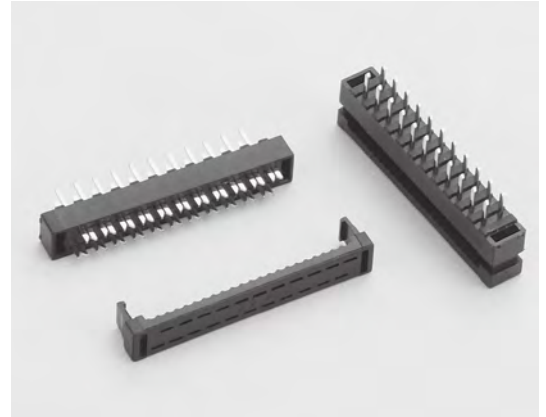
## SPECIFICATIONS

### Material

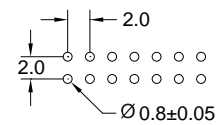
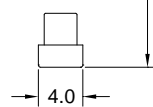
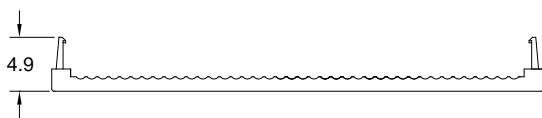
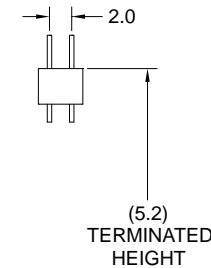
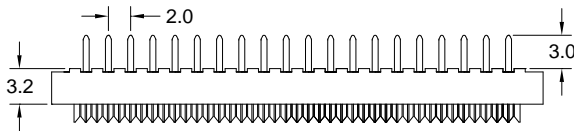
Insulator : PBT, glass reinforced, rated UL 94V-0  
 Contact : Phosphor Bronze

### Electrical

Current Rating : 1 Amp  
 Contact Resistance : 30 mΩ max.  
 Insulation Resistance : 3000 MΩ min.  
 Dielectric Withstanding Voltage : 500V AC for 1minute  
 Operating Temperature : -40°C to +105°C  
 ▶ Terminated with L02-1.00mm pitch flat ribbon cable.



POSITION	A	B
6	10.20	4.00
8	12.20	6.00
10	14.20	8.00
12	16.20	10.00
14	18.20	12.00
16	20.20	14.00
20	24.20	18.00
22	26.20	20.00
24	28.20	22.00
26	30.20	24.00
30	34.20	28.00
34	38.20	32.00
40	44.20	38.00
44	48.20	42.00
50	54.20	48.00
68	72.20	66.00



RECOMMENDED P.C.B LAYOUT



**How to order:** A11a - 1 - 2 - 3 - 4 - G(RoHS)

1.NO. OF CONTACT	2.CONTACT MATERIAL	3.CONTACT PLATING	4.INSULATOR COLOR
06 08 10 12 14 16 20 22 24 26 30 34 40 44 50 68	B: PHOSPHOR BRONZE	<b>T: TIN PLATED</b> S: SELECTIVE G: GOLD FLASH A: 5u" INCH GOLD B: 10u" INCH GOLD C: 15u" INCH GOLD D: 30u" INCH GOLD	1. BLACK



**DON CONNEX**  
ELECTRONICS CO., LTD

T:886 2 86483356 | F:886 2 86485885  
 e-mail: info@donconnex.com.tw



Connector: E163339 | Flat cable: E162690  
 Wiring Harnesses: E312257