

A11d DIP PLUG WITH 0.5mm SQUARE TAIL

PITCH: 2.0mm * 2.0mm

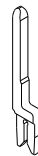
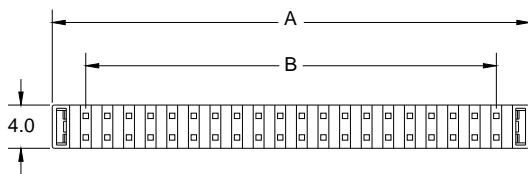
SPECIFICATIONS

Material

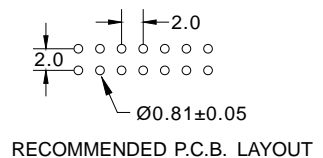
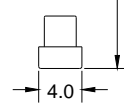
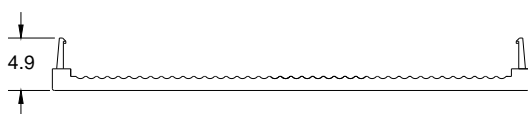
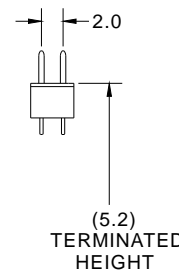
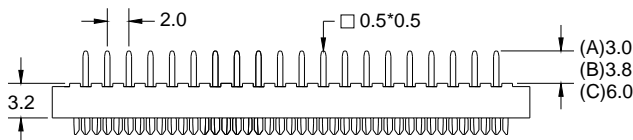
Insulator : PBT, glass reinforced, rated UL 94V-0
 Contact : Brass

Electrical

Current Rating : 1 Amp
 Contact Resistance : 30 mΩ max.
 Insulation Resistance : 3000 MΩ min.
 Dielectric Withstanding Voltage : 500V AC for 1minute
 Operating Temperature : -40°C to +105°C
 ▶ Terminated with L02-1.00mm pitch flat ribbon cable.



POSITION	A	B
8	12.20	6.00
10	14.20	8.00
12	16.20	10.00
14	18.20	12.00
16	20.20	14.00
20	24.20	16.80
22	26.20	20.00
24	28.20	22.00
26	30.20	24.00
30	34.20	28.00
34	38.20	32.00
40	44.20	38.00
44	48.20	42.00
50	54.20	48.00
68	72.20	66.00



How to order: A11d - 1 - 2 - 3 - 4 - 5 - G(RoHS)

1.NO. OF CONTACT	2.CONTACT MATERIAL	3.CONTACT PLATING	4.PIN LENGTH	5.INSULATOR COLOR
08 10 12 14 16 20 24 26 30 34 40 44 50 68	A: BRASS	T: TIN PLATED S: SELECTIVE G: GOLD FLASH A: 5u" INCH GOLD B: 10u" INCH GOLD C: 15u" INCH GOLD D: 30u" INCH GOLD	A: 3.0mm B: 3.8mm C: 6.0mm	1. BLACK