

A38b BOX HEADER IDC TYPE

PITCH: 2.0mm * 2.0mm

SPECIFICATIONS

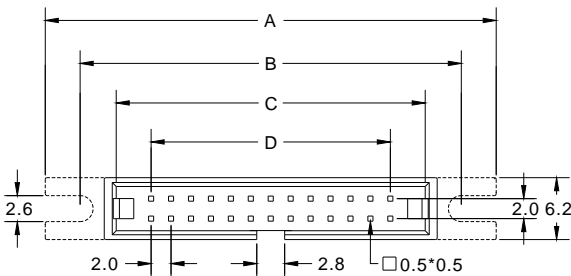
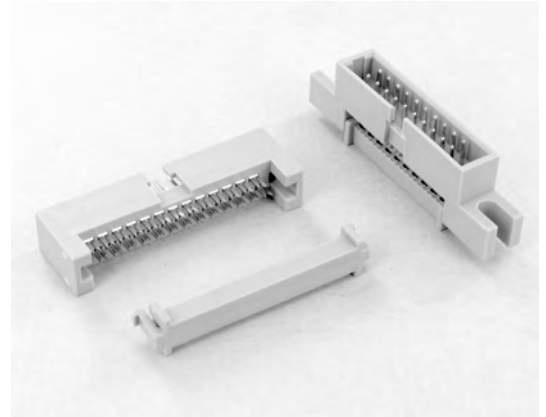
Material

Insulator : PBT, glass reinforced, rated UL 94V-0
 Contact : Phosphor Bronze

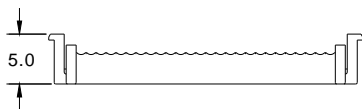
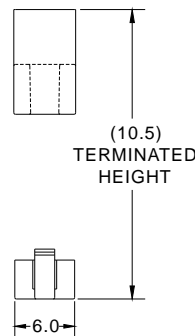
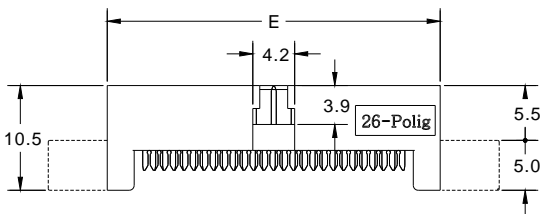
Electrical

Current Rating : 1 Amp
 Contact Resistance : 30 mΩ max.
 Insulation Resistance : 3000 MΩ min.
 Dielectric Withstanding Voltage : 500V AC for 1minute
 Operating Temperature : -40°C to +105°C

- ▶ Terminated with L02-1.00mm pitch flat ribbon cable.
- ▶ Mating Suggestion : A05d, B43, B44 & B45 series.



POSITION	A	B	C	D	E
6	25.24	18.24	11.00	4.00	13.40
8	27.24	20.24	13.00	6.00	15.40
10	29.24	22.24	15.00	8.00	17.40
12	31.24	24.24	17.00	10.00	19.40
14	33.24	26.24	19.00	12.00	21.40
16	35.24	28.24	21.00	14.00	23.40
20	39.24	32.24	25.00	18.00	27.40
22	41.24	34.24	27.00	20.00	29.40
24	43.24	36.24	29.00	22.00	31.40
26	45.24	38.24	31.00	24.00	33.40
30	49.24	42.24	35.00	28.00	37.40
34	53.24	46.24	39.00	32.00	41.40
40	59.24	52.24	45.00	38.00	47.40
44	63.24	56.24	49.00	42.00	51.40
50	69.24	62.24	55.00	48.00	57.40
68	87.24	80.24	73.00	66.00	75.40



How to order: A38b - 1 - 2 - 3 - 4 - 5 - G(RoHS)

1.NO. OF CONTACT	2.CONTACT MATERIAL	3.CONTACT PLATING	4.SPECIAL FUNCTION	5.INSULATOR COLOR
06 08 10 12 14 16 20 22 24 26 30 34 40 44 50 68	B: PHOSPHOR BRONZE	T: TIN PLATED S: SELECTIVE G: GOLD FLASH A: 5u" INCH GOLD B: 10u" INCH GOLD C: 15u" INCH GOLD D: 30u" INCH GOLD	A: W EAR B: W/O EAR	2. GREY

