

A60a EDGE CARD IDC TYPE WITH MOUNTING EAR

PITCH: 2.0mm * 2.0mm

SPECIFICATIONS

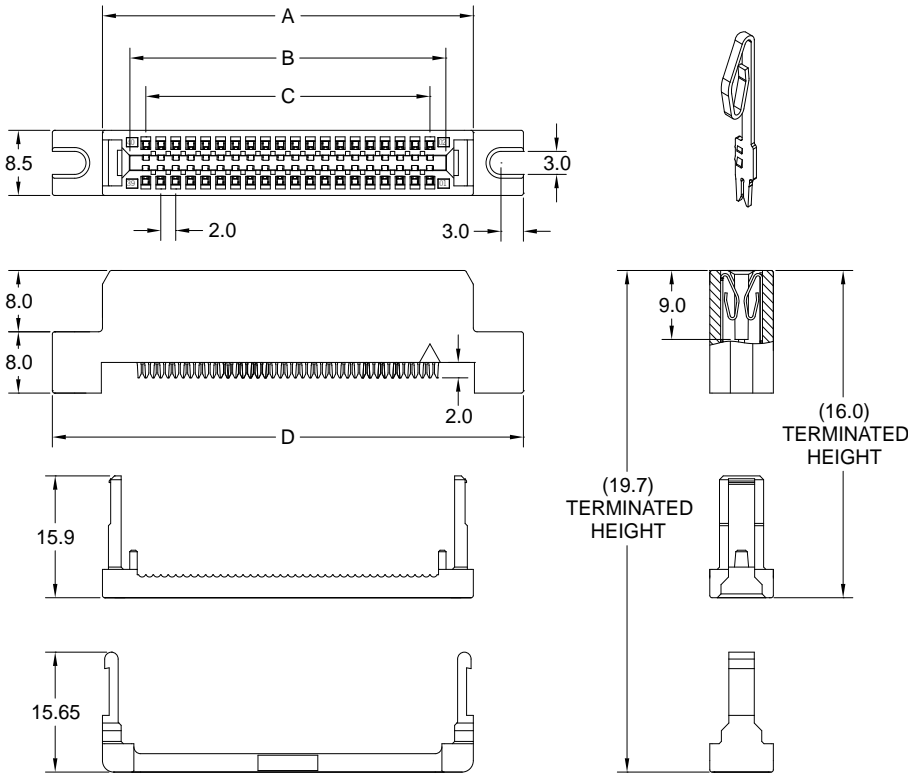
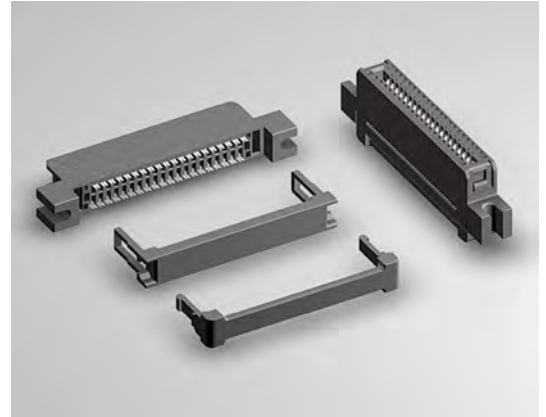
Material

Insulator : PBT, glass reinforced, rated UL 94V-0
 Contact : Phosphor Bronze

Electrical

Current Rating : 1 Amp
 Contact Resistance : 30 mΩ max.
 Insulation Resistance : 3000 MΩ min.
 Dielectric Withstanding Voltage : 500V AC for 1minute
 Operating Temperature : -40°C to +105°C

▶ Terminated with L02-1.00mm pitch flat ribbon cable.



POSITION	A	B	C	D
8	17.60	10.26	6.00	31.00
10	19.60	12.26	8.00	33.00
12	21.60	14.26	10.00	35.00
14	23.60	16.26	12.00	37.00
16	25.60	18.26	14.00	39.00
20	29.60	22.26	18.00	43.00
22	31.60	24.26	20.00	45.00
24	33.60	26.26	22.00	47.00
26	35.60	28.26	24.00	49.00
30	39.60	32.26	28.00	53.00
34	43.60	36.26	32.00	57.00
40	49.60	42.26	38.00	63.00
44	53.60	46.26	42.00	67.00
50	59.60	52.26	48.00	73.00
68	77.60	70.26	66.00	91.00

How to order: A60a - 1 - 2 - 3 - 4 - 5 - G(RoHS)

1.NO. OF CONTACT	2.CONTACT MATERIAL	3.CONTACT PLATING	4.SPECIAL FUNCTION	5.INSULATOR COLOR
08 10 12 14 16 20 22 24 26 30 34 40 44 50 68	B: PHOSPHOR BRONZE	T: TIN PLATED S: SELECTIVE G: GOLD FLASH A: 5u" INCH GOLD B: 10u" INCH GOLD C: 15u" INCH GOLD D: 30u" INCH GOLD	A: W STRAIN RELIEF W PLUGGED KEY B: W/O STRAIN RELIEF W PLUGGED KEY C: W STRAIN RELIEF W/O PLUGGED KEY D: W/O STRAIN RELIEF W/O PLUGGED KEY	1. BLACK

