

# A76 CLOSE END DIP PLUG

**PITCH: 2.0mm \* 2.0mm**

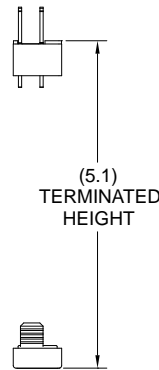
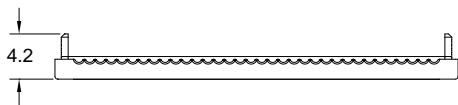
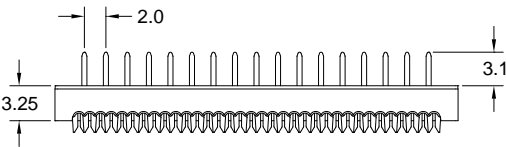
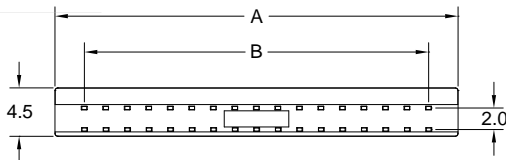
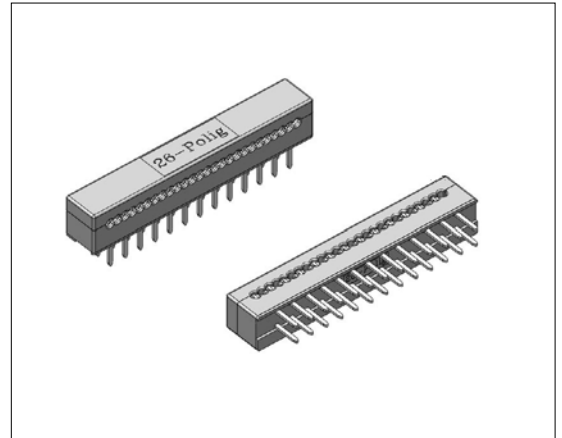
## SPECIFICATIONS

### Material

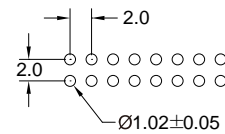
Insulator : PBT, glass reinforced, rated UL 94V-0  
 Contact : Phosphor Bronze

### Electrical

Current Rating : 1 Amp  
 Contact Resistance : 30 mΩ max.  
 Insulation Resistance : 3000 MΩ min.  
 Dielectric Withstanding Voltage : 500V AC for 1minute  
 Operating Temperature : -40°C to +105°C  
 ▶ Terminated with L02-1.00mm pitch flat ribbon cable.



POSITION	A	B
4	7.47	2.00
6	9.47	4.00
8	11.47	6.00
10	13.47	8.00
12	15.47	10.00
14	17.47	12.00
16	19.47	14.00
20	23.47	18.00
24	27.47	22.00
26	29.47	24.00
30	33.47	28.00
34	37.47	32.00
40	43.47	38.00
44	47.47	42.00
50	53.47	48.00



RECOMMENDED P.C.B LAYOUT

**How to order:** A76 - 1 - 2 - 3 - 4 - G(RoHS)

1.NO. OF CONTACT	2.CONTACT MATERIAL	3.CONTACT PLATING	4.INSULATOR COLOR
04 06 08 10 12 14 16 20 24 26 30 34 40 44 50	B: PHOSPHOR BRONZE	<b>T: TIN PLATED</b> S: SELECTIVE G: GOLD FLASH A: 5u" INCH GOLD B: 10u" INCH GOLD C: 15u" INCH GOLD D: 30u" INCH GOLD	1. BLACK



**DON CONNEX**  
ELECTRONICS CO., LTD

T:886 2 86483356 | F:886 2 86485885  
e-mail:info@donconnex.com.tw



Connector:E163339 | Flat cable:E162690  
Wiring Harnesses:E312257