

A40 WIRE TO BOARD CONNECTOR (CRIMP HOUSING)

PITCH: 2.54mm & 2.54mm * 2.54mm

SPECIFICATIONS

Material

Insulator : PBT, glass reinforced, rated UL 94V-0

Electrical

Current Rating : 1 Amp

Contact Resistance : 30 mΩ max.

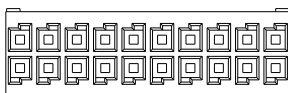
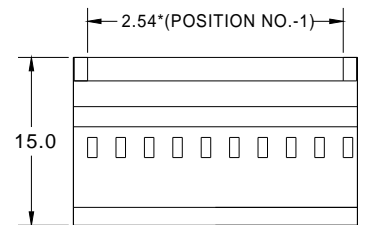
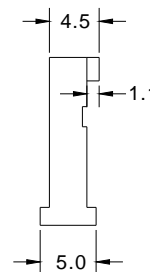
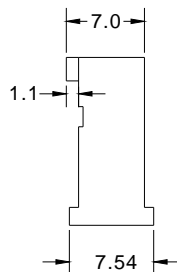
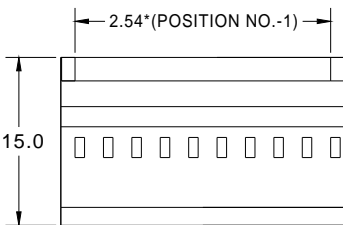
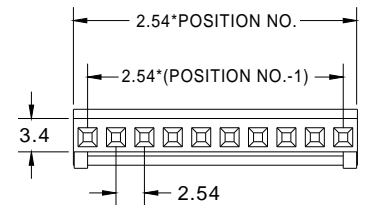
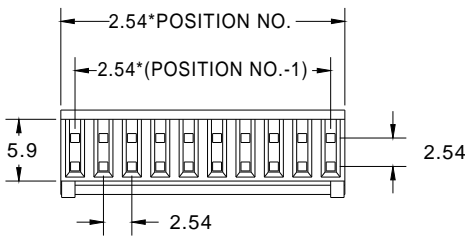
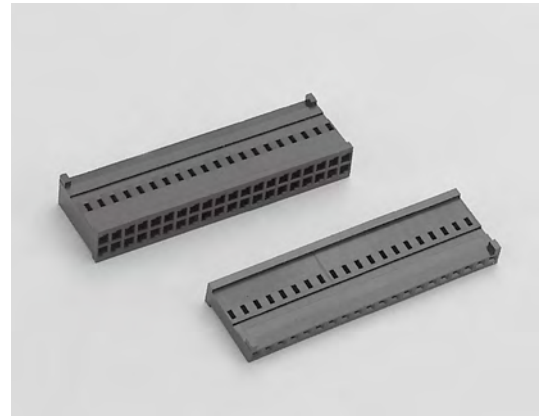
Insulation Resistance : 3000 MΩ min.

Dielectric Withstanding Voltage : 500V AC for 1minute

Operating Temperature : -40°C to +105°C

▶ Crimp Terminal Insertion: A40a series.

▶ Mating Suggestion: C38,C38a,C39,C39a,C40 &C41 series.



How to order: A40 - ¹ - ² - G(RoHS)

1.NO. OF CONTACT	2.INSULATOR COLOR
SINGLE ROW 1*2 - 1*20 DUAL ROW 2*2 - 2*20	1. BLACK