

# A52c SINGLE ROW HALF PITCH WIRE TO BOARD CRIMP HOUSING

**PITCH: 1.27mm \* 1.27mm**

## SPECIFICATIONS

### Material

Insulator : LCP, rated UL 94V-0

### Electrical

Current Rating : 1 Amp

Contact Resistance : 30 mΩ max.

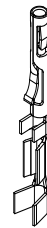
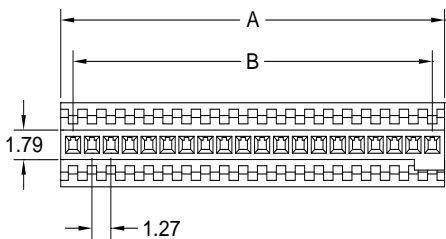
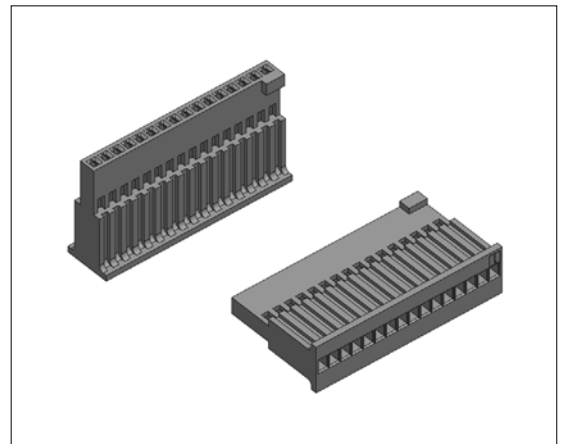
Insulation Resistance : 1000 MΩ min.

Dielectric Withstanding Voltage : 250V AC for 1minute

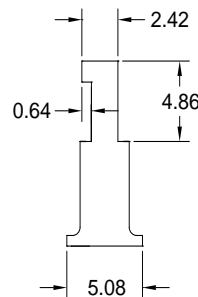
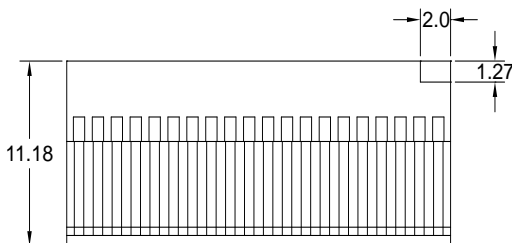
Operating Temperature : -40°C to +105°C

▶ Crimp Terminal Insertion: A52b series.

▶ Mating Suggestion: C104 & C104a series.



POSITION	A	B
2	2.92	1.27
3	4.19	2.54
4	5.46	3.81
5	6.73	5.08
6	8.00	6.35
7	9.27	7.62
8	10.54	8.89
9	11.81	10.16
10	13.08	11.43
11	14.35	12.70
12	15.62	13.97
13	16.89	15.24
14	18.16	16.51
15	19.43	17.78
20	25.78	24.13
25	32.13	30.48
30	38.48	36.83
35	44.83	43.18
40	51.18	49.53



**How to order:** A52c - 1 - 2 - G(RoHS)

1.NO. OF CONTACT	2.INSULATOR COLOR
02 03 04 05 06 07 08 09 10 11 12 13 14 15 20 25 30 35 40	1. BLACK