

A63 FINE PITCH WIRE TO BOARD CONNECTOR WITH STEEL LATCH (CRIMP HOUSING)

PITCH: 1.27mm * 2.54mm

SPECIFICATIONS

Material

Insulator : LCP, glass reinforced, rated UL 94V-0

Electrical

Current Rating : 1 Amp

Contact Resistance : 30 mΩ max.

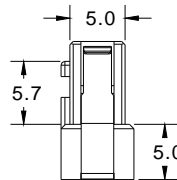
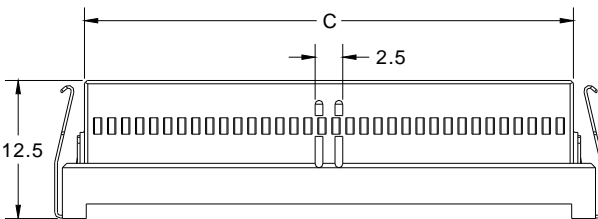
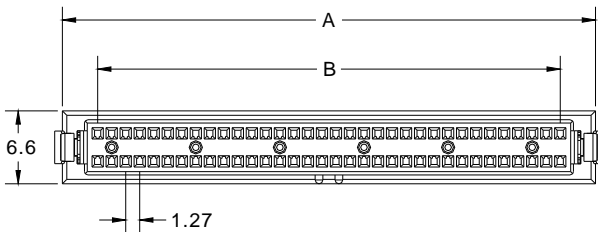
Insulation Resistance : 1000 MΩ min.

Dielectric Withstanding Voltage : 250V AC for 1minute

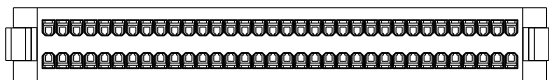
Operating Temperature : -40°C to +105°C

▶ Crimp Terminal Insertion : A52b series.

▶ Mating Suggestion : C55, C55a & C55b series.



POSITION	A	B	C
10	11.47	5.08	7.47
14	14.01	7.62	10.01
16	15.28	8.89	11.28
20	17.82	11.43	13.82
24	20.36	13.97	16.36
26	21.63	15.24	17.63
30	24.17	17.78	20.17
34	26.71	20.32	22.71
40	30.52	24.13	26.52
44	33.06	26.67	29.06
50	36.87	30.48	32.87
60	43.22	36.83	39.22
64	45.76	39.37	41.76
68	48.30	41.91	44.30
72	50.84	44.45	46.84
80	55.92	49.53	51.92
100	68.62	62.23	64.62



How to order: A63 - 1 - 2 - G(RoHS)

1.NO. OF CONTACT	2.INSULATOR COLOR
10 14 16 20 24 26 30 34 40 44 50 60 64 68 72 80 100	1. BLACK