

A34 SINGLE ROW EDGE CARD IDC TYPE

PITCH: 2.5mm

SPECIFICATIONS

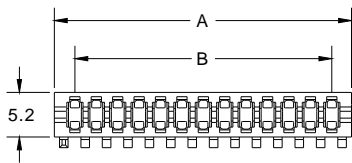
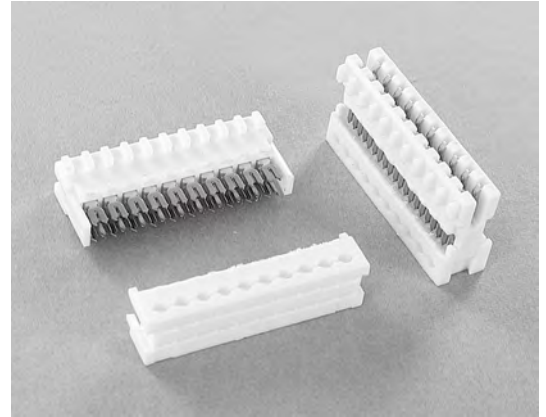
Material

Insulator : PBT, glass reinforced, rated UL 94V-0
 Contact : Phosphor Bronze

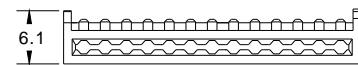
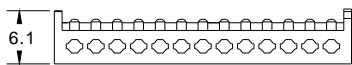
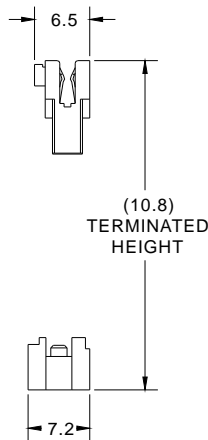
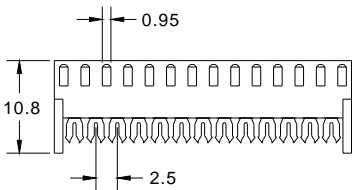
Electrical

Current Rating : 2 Amp
 Contact Resistance : 30 mΩ max.
 Insulation Resistance : 3000 MΩ min.
 Dielectric Withstanding Voltage : 500V AC for 1minute
 Operating Temperature : -40°C to +105°C

► Terminated with L04a-2.5mm pitch flat ribbon cable.



POSITION	A	B
2	7.20	2.50
3	9.70	5.00
4	12.20	7.50
5	14.70	10.00
6	17.20	12.50
7	19.70	15.00
8	22.20	17.50
9	24.70	20.00
10	27.20	22.50
11	29.70	25.00
12	32.20	27.50
13	34.70	30.00
14	37.20	32.50
15	39.70	35.00
16	42.20	37.50
17	44.70	40.00
18	47.20	42.50
19	49.70	45.00
20	52.20	47.50



TYPE A (CLOSE END)

TYPE B (FEED-THRU)

How to order: A34 - 1 - 2 - 3 - 4 - 5 - G(RoHS)

1.NO. OF CONTACT	2.CONTACT MATERIAL	3.CONTACT PLATING	4. COVER TYPE	5.INSULATOR COLOR
02 03 04 05 06 07 08 09 10 11 12 13 14 15 16 17 18 19 20	B: PHOSPHOR BRONZE	T: TIN PLATED S: SELECTIVE G: GOLD FLASH A: 5u" INCH GOLD B: 10u" INCH GOLD C: 15u" INCH GOLD D: 30u" INCH GOLD	A: CLOSE END B: FEED-THRU	5. WHITE



DON CONNEX
ELECTRONICS CO., LTD

T:886 2 86483356 | F:886 2 86485885
e-mail:info@donconnex.com.tw



Connector:E163339 | Flat cable:E162690
Wiring Harnesses:E312257