

A59a IDC TRANSITION PLUG (SMT TYPE)

PITCH: 2.5mm

SPECIFICATIONS

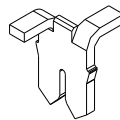
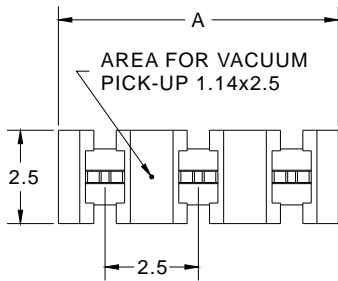
Material

Insulator : LCP, glass reinforced, rated UL 94V-0
 Contact : Phosphor Bronze

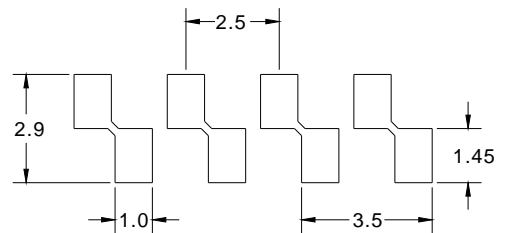
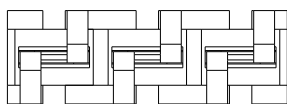
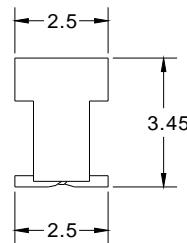
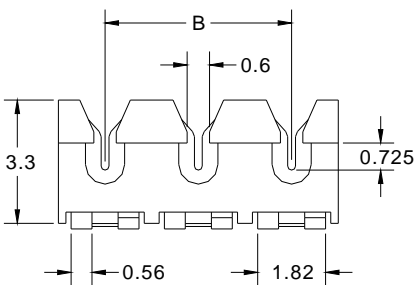
Electrical

Current Rating : 1 Amp
 Contact Resistance : 30 mΩ max.
 Insulation Resistance : 3000 MΩ min.
 Dielectric Withstanding Voltage : 500V AC for 1minute
 Operating Temperature : -40°C to +105°C

▶ Terminated with discrete wire : AWG#28 - 26 (Insulation O.D. 0.7 to 1.0mm)



POSITION	A	B
01	2.5	- -
02	5.0	2.5
03	7.5	5.0
04	10.0	7.5
05	12.5	10.0
06	15.0	12.5
07	17.5	15.0
08	20.0	17.5
09	22.5	20.0
10	25.0	22.5



RECOMMENDED P.C.B LAYOUT

How to order: A59a - 1 - 2 - 3 - 4 - 5 - G(RoHS)

1.NO. OF CONTACT	2.CONTACT MATERIAL	3.CONTACT PLATING	4.PACKAGING	5.INSULATOR COLOR
01 02 03 04 05 06 07 08 09 10	B: PHOSPHOR BRONZE	T: TIN PLATED	B: TUBE W/O PAD D: TAPE & REEL W/O PAD	1. BLACK