

A10 EDGE CARD IDC TYPE (REINFORCED TYPE)

PITCH: 2.54mm

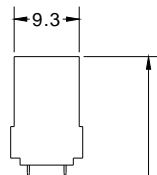
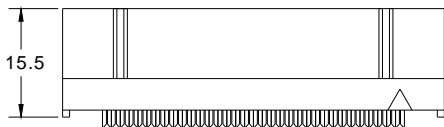
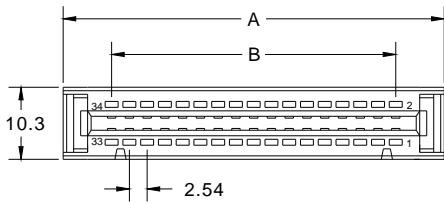
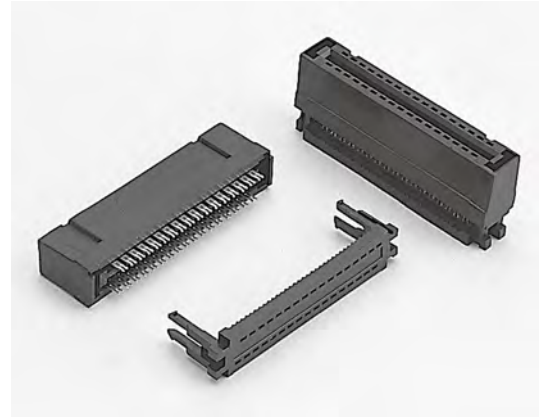
SPECIFICATIONS

Material

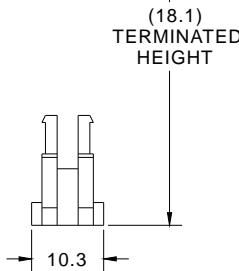
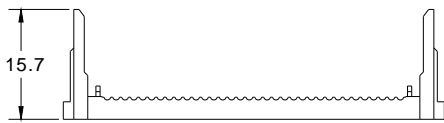
Insulator : PBT, glass reinforced, rated UL 94V-0
 Contact : Phosphor Bronze or Brass

Electrical

Current Rating : 1 Amp
 Contact Resistance : 30 mΩ max.
 Insulation Resistance : 3000 MΩ min.
 Dielectric Withstanding Voltage : 500V AC for 1minute
 Operating Temperature : -40°C to +105°C
 ▶ Terminated with L01-1.27mm pitch flat ribbon cable.



POSITION	A	B
20	36.82	22.86
34	54.60	40.64



How to order: A10 - 1 - 2 - 3 - 4 - 5 - G(RoHS)

1.NO. OF CONTACT	2.CONTACT MATERIAL	3.CONTACT PLATING	4.SPECIAL FUNCTION	5.INSULATOR COLOR
20 34	A: BRASS B: PHOSPHOR BRONZE	T: TIN PLATED S: SELECTIVE G: GOLD FLASH A: 5u" INCH GOLD B: 10u" INCH GOLD C: 15u" INCH GOLD D: 30u" INCH GOLD	B: W/O STRAIN RELIEF W PLUGGED KEY D: W/O STRAIN RELIEF W/O PLUGGED KEY	1. BLACK

