

A11f SUPER LOW PROFILE DIP PLUG (.1"*.1") H: 5.4mm

PITCH: 2.54mm*2.54mm

SPECIFICATIONS

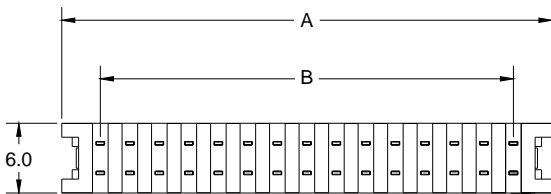
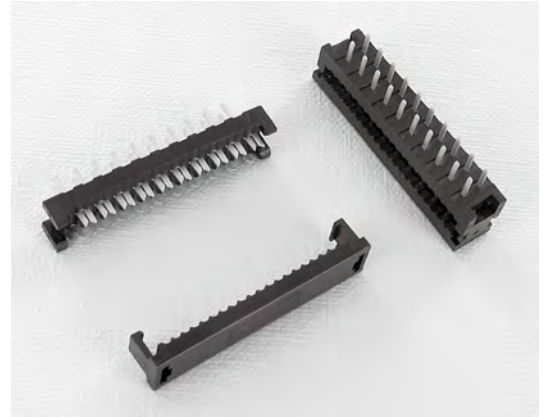
Material

Insulator : PBT, glass reinforced, rated UL 94V-0
 Contact : Phosphor Bronze

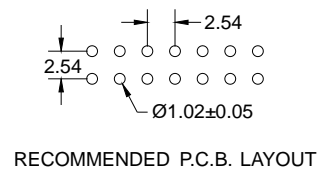
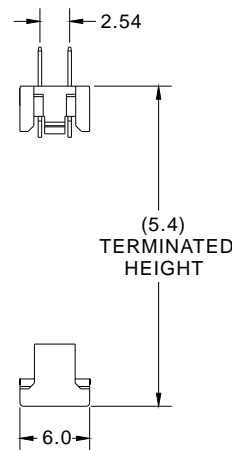
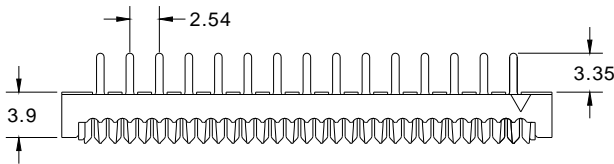
Electrical

Current Rating : 1 Amp
 Contact Resistance : 30 mΩ max.
 Insulation Resistance : 3000 MΩ min.
 Dielectric Withstanding Voltage : 500V AC for 1minute
 Operating Temperature : -40°C to +105°C

► Terminated with L01-1.27mm pitch flat ribbon cable.



POSITION	A	B
6	11.72	5.08
8	14.26	7.62
10	16.80	10.16
12	19.34	12.70
14	21.88	15.24
16	24.42	17.78
20	29.50	22.86
24	34.58	27.94
26	37.12	30.48
30	42.20	35.56
32	44.74	38.10
34	47.28	40.64
40	54.90	48.26
50	67.60	60.96
60	80.30	73.66
64	85.38	78.74



How to order: A11f - 1 - 2 - 3 - 4 - G(RoHS)

1.NO. OF CONTACT	2.CONTACT MATERIAL	3.CONTACT PLATING	4.INSULATOR COLOR
06 08 10 12 14 16 20 24 26 30 32 34 40 50 60 64	B: PHOSPHOR BRONZE	T: TIN PLATED S: SELECTIVE G: GOLD FLASH A: 5u" INCH GOLD B: 10u" INCH GOLD C: 15u" INCH GOLD D: 30u" INCH GOLD	1. BLACK 2. GREY