

A12a SHRUNK DIP PLUG (.1" * .1")

PITCH: 2.54mm * 2.54mm

SPECIFICATIONS

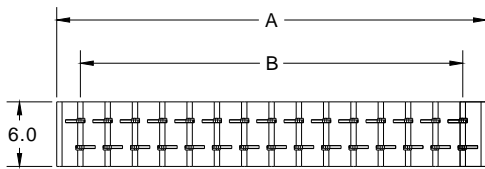
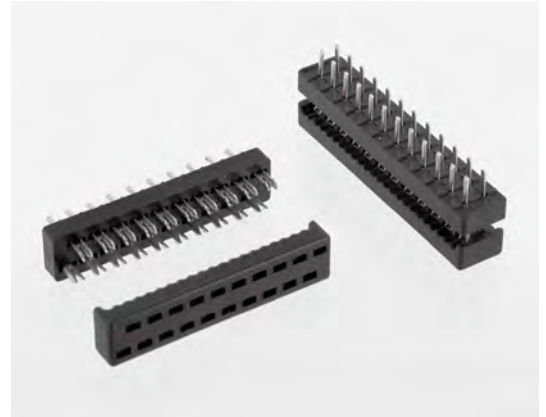
Material

Insulator : PBT, glass reinforced, rated UL 94V-0
 Contact : Phosphor Bronze

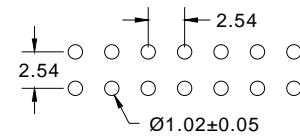
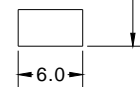
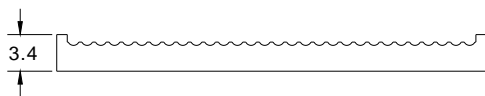
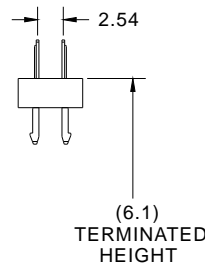
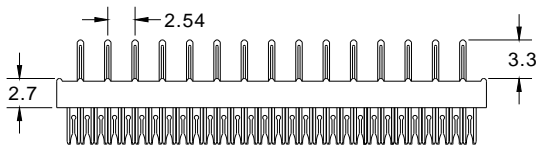
Electrical

Current Rating : 1 Amp
 Contact Resistance : 30 mΩ max.
 Insulation Resistance : 3000 MΩ min.
 Dielectric Withstanding Voltage : 500V AC for 1minute
 Operating Temperature : -40°C to +105°C

▶ Terminated with L01-1.27mm pitch flat ribbon cable.



POSITION	A	B
6	9.48	5.08
8	12.02	7.62
10	14.56	10.16
12	17.10	12.70
14	19.64	15.24
16	22.18	17.78
20	27.26	22.86
24	32.24	27.94
26	34.88	30.48
28	37.42	33.02
30	39.96	35.56
34	45.04	40.64
40	52.66	48.26
50	65.36	60.96
60	78.06	73.66
64	83.14	78.74



RECOMMENDED P.C.B LAYOUT

How to order: A12a - 1 - 2 - 3 - 4 - G(RoHS)

1.NO. OF CONTACT	2.CONTACT MATERIAL	3.CONTACT PLATING	4.INSULATOR COLOR
06 08 10 12 14 16 20 24 26 30 34 40 50 60 64	B: PHOSPHOR BRONZE	T: TIN PLATED S: SELECTIVE G: GOLD FLASH A: 5u" INCH GOLD B: 10u" INCH GOLD C: 15u" INCH GOLD D: 30u" INCH GOLD	1. BLACK