

# A23e DIN 41612 IDC TYPE MALE TRIPLE ROW (A+B+C)

**PITCH: 2.54mm \* 2.54mm**

## SPECIFICATIONS

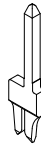
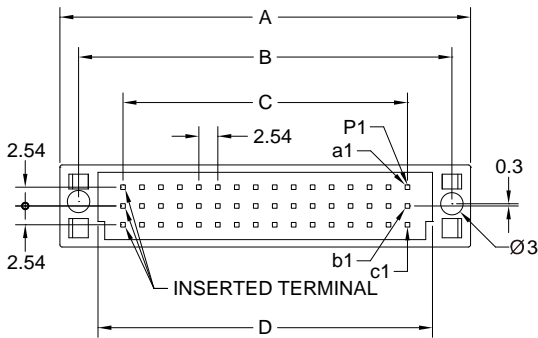
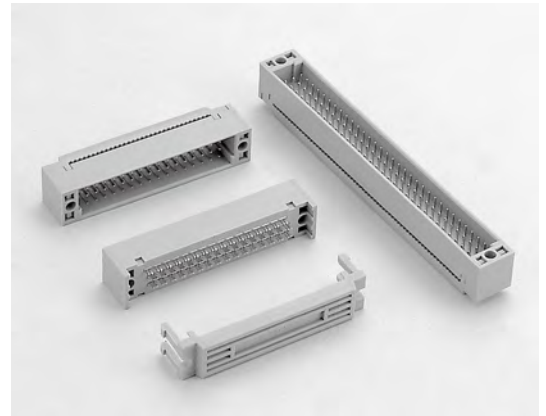
### Material

Insulator : PBT, glass reinforced, rated UL 94V-0  
 Contact : Phosphor Bronze

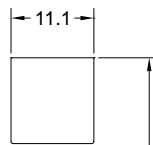
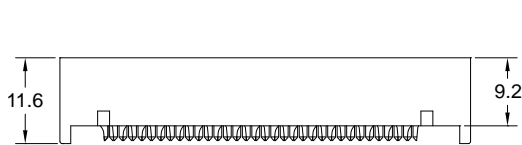
### Electrical

Current Rating : 1 Amp  
 Contact Resistance : 30 mΩ max.  
 Insulation Resistance : 3000 MΩ min.  
 Dielectric Withstanding Voltage : 500V AC for 1minute  
 Operating Temperature : -40°C to +105°C

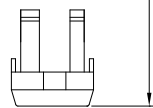
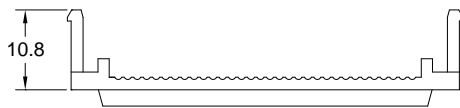
- ▶ Terminated with L05-0.85mm pitch flat ribbon cable.
- ▶ Mating Suggestion : A23c series.



| POSITION  | A  | B  | C     | D    |
|-----------|----|----|-------|------|
| 48(A+B+C) | 55 | 50 | 38.10 | 44.8 |
| 96(A+B+C) | 95 | 90 | 78.74 | 85.4 |



(13.8)  
TERMINATED  
HEIGHT



**How to order:** A23e - 1 - 2 - 3 - 4 - 5 - G(RoHS)

| 1.NO. OF CONTACT | 2.CONTACT TYPE | 3.CONTACT MATERIAL | 4.CONTACT PLATING                                                                                                                 | 5.INSULATOR COLOR |
|------------------|----------------|--------------------|-----------------------------------------------------------------------------------------------------------------------------------|-------------------|
| 48 96            | M: MALE        | B: PHOSPHOR BRONZE | T: TIN PLATED<br>S: SELECTIVE<br>G: GOLD FLASH<br>A: 5u" INCH GOLD<br>B: 10u" INCH GOLD<br>C: 15u" INCH GOLD<br>D: 30u" INCH GOLD | 2. GREY           |



**DON CONNEX**  
ELECTRONICS CO., LTD

T:886 2 86483356 | F:886 2 86485885  
e-mail:info@donconnex.com.tw



Connector:E163339 | Flat cable:E162690  
Wiring Harnesses:E312257