

# A28 MINI-SIZE CONNECTOR (MALE ON WIRE TYPE)

**PITCH: 2.54mm \* 1.5mm**

## SPECIFICATIONS

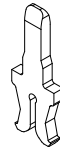
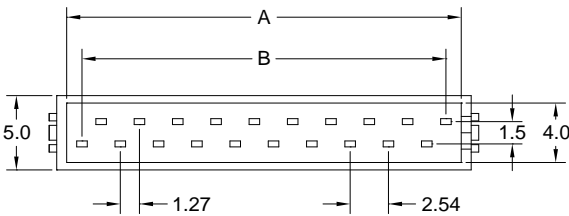
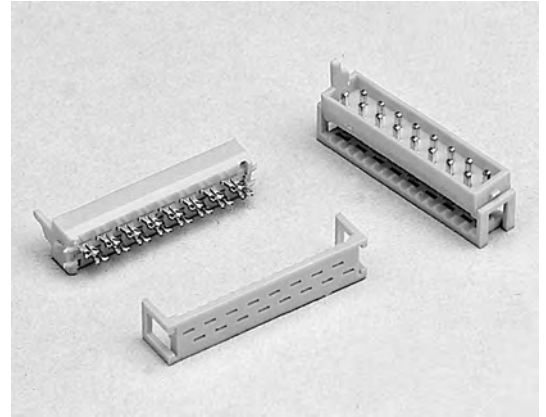
### Material

Insulator : PBT, glass reinforced, rated UL 94V-0  
 Contact : Phosphor Bronze

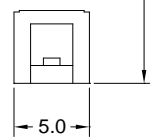
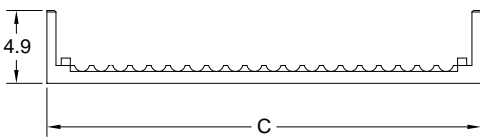
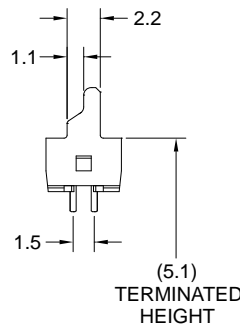
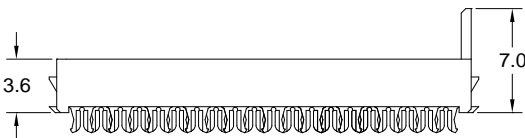
### Electrical

Current Rating : 1 Amp  
 Contact Resistance : 30 mΩ max.  
 Insulation Resistance : 3000 MΩ min.  
 Dielectric Withstanding Voltage : 500V AC for 1minute  
 Operating Temperature : -40°C to +105°C

- ▶ Terminated with L01-1.27mm pitch flat ribbon cable.
- ▶ Mating Suggestion : A28b, A28c & A28d series.



POSITION	A	B	C
4	5.84	3.81	8.46
6	8.38	6.35	11.00
8	10.92	8.89	13.54
10	13.46	11.43	16.08
12	16.00	13.97	18.62
14	18.54	16.51	21.16
16	21.08	19.05	23.70
18	23.62	21.59	26.24
20	26.16	24.13	28.78
22	28.70	26.67	31.32
24	31.24	29.21	33.86
26	33.78	31.75	36.40



**How to order:** A28 - 1 - 2 - 3 - 4 - G(RoHS)

1.NO. OF CONTACT	2.CONTACT MATERIAL	3.CONTACT PLATING	4.INSULATOR COLOR
04 06 08 10 12 14 16 18 20 22 24 26	B: PHOSPHOR BRONZE	<b>T: TIN PLATED</b> S: SELECTIVE G: GOLD FLASH A: 5u" INCH GOLD B: 10u" INCH GOLD C: 15u" INCH GOLD D: 30u" INCH GOLD	6. RED



**DON CONNEX**  
ELECTRONICS CO., LTD

T:886 2 86483356 | F:886 2 86485885  
e-mail:info@donconnex.com.tw



Connector:E163339 | Flat cable:E162690  
Wiring Harnesses:E312257