

# A28c MINI-SIZE CONNECTOR (FEMALE ON BOARD SIDE ENTRY TYPE)

**PITCH: 2.54mm \* 1.5mm**

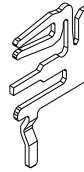
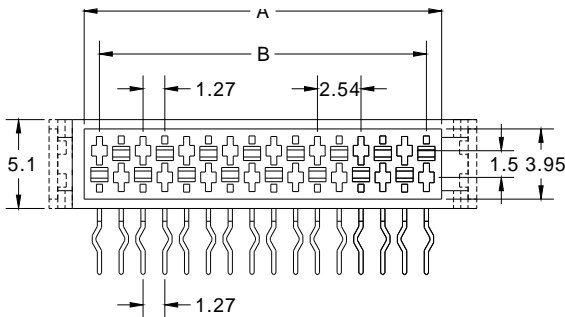
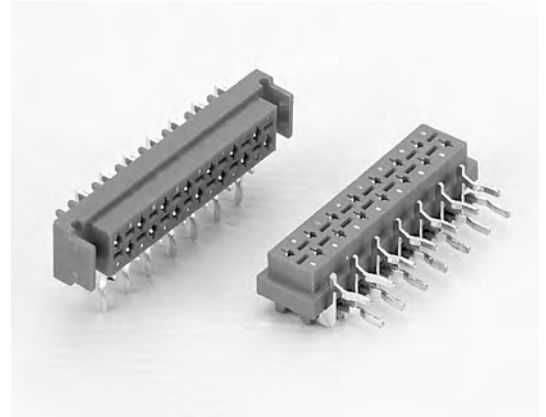
## SPECIFICATIONS

### Material

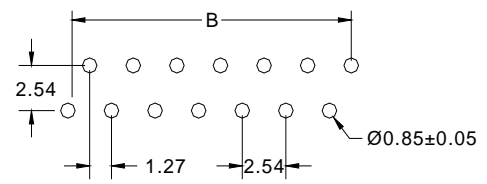
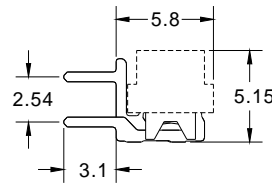
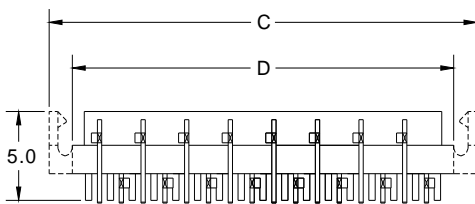
Insulator : PBT, glass reinforced, rated UL 94V-0  
Contact : Phosphor Bronze

### Electrical

Current Rating : 1 Amp  
Contact Resistance : 30 mΩ max.  
Insulation Resistance : 3000 MΩ min.  
Dielectric Withstanding Voltage : 500V AC for 1minute  
Operating Temperature : -40°C to +105°C  
▶ Mating Suggestion : A28, A28e, A28f & A28g series.



POSITION	A	B	C	D
4	5.59	3.81	9.68	6.98
6	8.13	6.35	12.22	9.52
8	10.67	8.89	14.76	12.06
10	13.21	11.43	17.30	14.60
12	15.75	13.97	19.84	17.14
14	18.29	16.51	22.38	19.68
16	20.83	19.05	24.92	22.22
18	23.37	21.59	27.46	24.76
20	25.91	24.13	30.00	27.30
22	28.45	26.67	32.54	29.84
24	30.99	29.21	35.08	32.38
26	33.53	31.75	37.62	34.92



RECOMMENDED P.C.B LAYOUT

**How to order:** A28c - 1 - 2 - 3 - 4 - 5 - 6 - G(RoHS)

1.NO. OF CONTACT	2.CONTACT MATERIAL	3.CONTACT PLATING	4.SPECIAL FUNCTION	5.PARTS OPTION	6.INSULATOR COLOR
04 06 08 10 12 14 16 18 20 22 24 26	B: PHOSPHOR BRONZE	T: TIN PLATED S: SELECTIVE G: GOLD FLASH A: 5u" INCH GOLD B: 10u" INCH GOLD C: 15u" INCH GOLD D: 30u" INCH GOLD	A:W POLARIZATION B:W/O POLARIZATION	A:WITH LOCKING B:W/O LOCKING	6. RED

