

A28i MINI-SIZE CONNECTOR (FEMALE ON BOARD SMT SIDE ENTRY TYPE)

PITCH: 2.54mm * 1.5mm

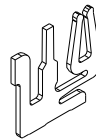
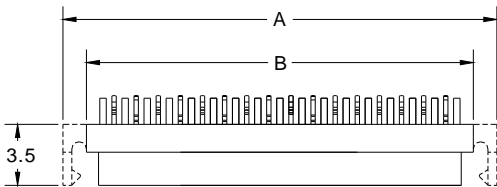
SPECIFICATIONS

Material

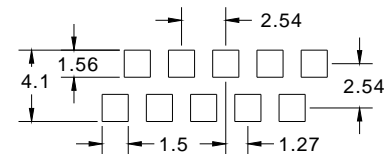
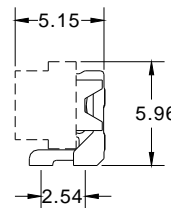
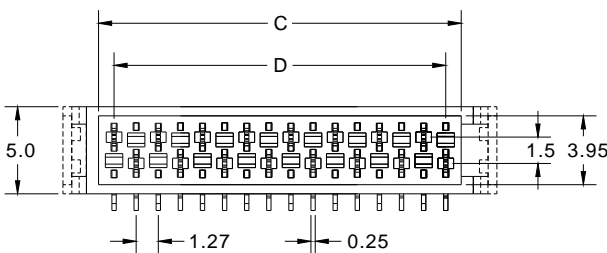
Insulator : Nylon 6T, glass reinforced, rated UL 94V-0
Contact : Phosphor Bronze

Electrical

Current Rating : 1 Amp
Contact Resistance : 30 mΩ max.
Insulation Resistance : 3000 MΩ min.
Dielectric Withstanding Voltage : 500V AC for 1minute
Operating Temperature : -40°C to +105°C
▶ Mating Suggestion: A28, A28e, A28f & A28g series.



POSITION	A	B	C	D
4	9.68	6.98	5.59	3.81
6	12.22	9.52	8.13	6.35
8	14.76	12.06	10.67	8.89
10	17.30	14.60	13.21	11.43
12	19.84	17.14	15.75	13.97
14	22.38	19.68	18.29	16.51
16	24.92	22.22	20.83	19.05
18	27.46	24.76	23.37	21.59
20	30.00	27.30	25.91	24.13
22	32.54	29.84	28.45	26.67
24	35.08	32.38	30.99	29.21
26	37.62	34.92	33.53	31.75



RECOMMENDED P.C.B LAYOUT

How to order: A28i - 1 - 2 - 3 - 4 - 5 - 6 - 7 - G(RoHS)

1.NO. OF CONTACT		2. CONTACT MATERIAL		3.CONTACT PLATING	
04 06 08 10 12 14 16 18 20 22 24 26		B: PHOSPHOR BRONZE		T: TIN PLATED S: SELECTIVE G: GOLD FLASH A: 5u" INCH GOLD B: 10u" INCH GOLD C: 15u" INCH GOLD D: 30u" INCH GOLD	
4. SPECIAL FUNCTION	5. PART OPTION	6. PACKAGING	7. INSULATOR COLOR		
A: WITH POLARIZATION B: W/O POLARIZATION	A: WITH LOCKING B: W/O LOCKING	B: TUBE W/O PAD	6. RED		

