

A29a ULTRA DIP PLUG (.1" * .1")

PITCH: 2.54mm * 2.54mm

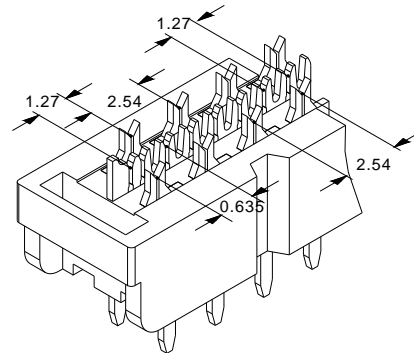
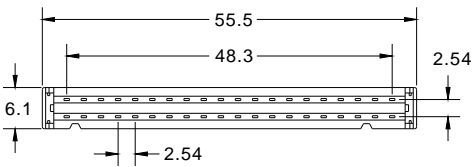
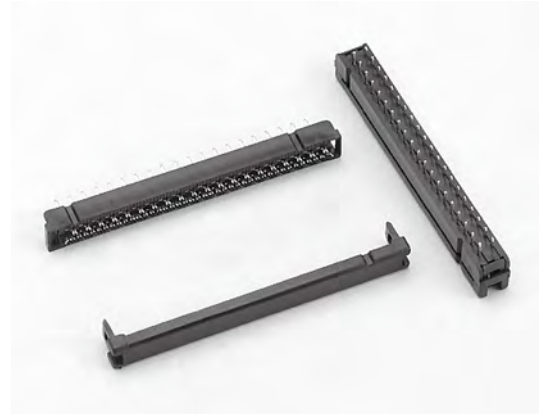
SPECIFICATIONS

Material

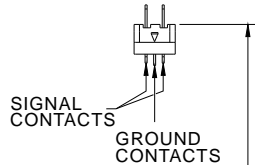
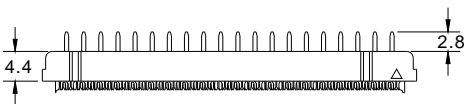
Insulator : PBT, glass reinforced, rated UL 94V-0
 Contact : Phosphor Bronze

Electrical

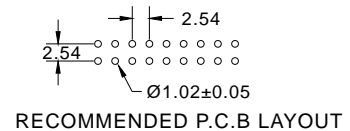
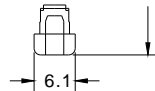
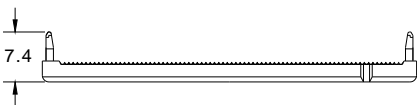
Current Rating : 1 Amp
 Contact Resistance : 30 mΩ max.
 Insulation Resistance : 3000 MΩ min.
 Dielectric Withstanding Voltage : 500V AC for 1minute
 Operating Temperature : -40°C to +105°C
 ▶ Terminated with L03-0.635mm pitch flat ribbon cable.



(WIRE ACCOMMODATION: 30 AWG SOLID OR STRANDED 0.635mm(0.025") 80 CONDUCTORS FLAT RIBBON CABLE)



(7.8) TERMINATED HEIGHT



How to order: A29a - 1 - 2 - 3 - 4 - G(RoHS)

1.NO. OF CONTACT	2.CONTACT MATERIAL	3.CONTACT PLATING	4.INSULATOR COLOR
40	B: PHOSPHOR BRONZE	T: TIN PLATED S: SELECTIVE G: GOLD FLASH A: 5u" INCH GOLD B: 10u" INCH GOLD C: 15u" INCH GOLD D: 30u" INCH GOLD	1. BLACK 2. GREY 3. BLUE



DON CONNEX
ELECTRONICS CO., LTD

T:886 2 86483356 | F:886 2 86485885
 e-mail:info@donconnex.com.tw



Connector:E163339 | Flat cable:E162690
 Wiring Harnesses:E312257