

A33b DONCO CONNECTOR MALE ON BOARD VERTICAL TYPE

PITCH: 2.54mm

SPECIFICATIONS

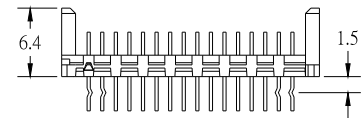
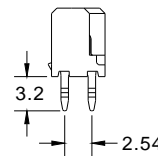
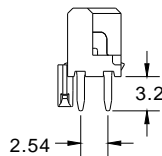
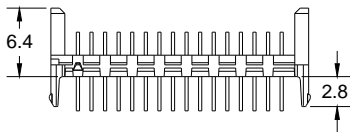
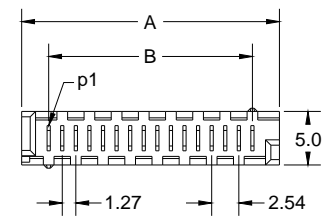
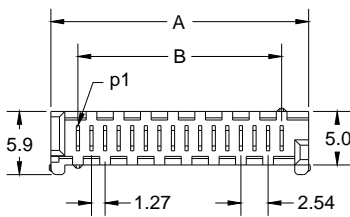
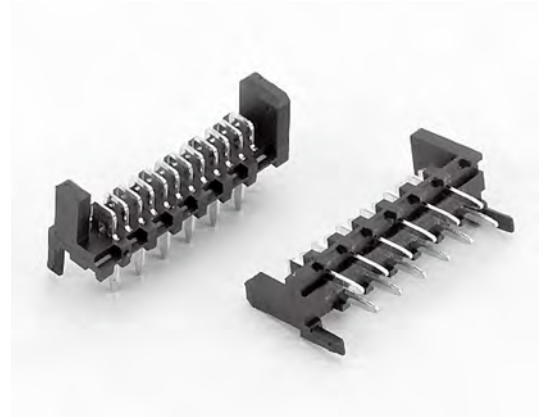
Material

Insulator : PBT, glass reinforced, rated UL 94V-0
 Contact : Phosphor Bronze

Electrical

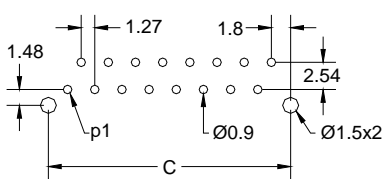
Current Rating : 1 Amp
 Contact Resistance : 30 mΩ max.
 Insulation Resistance : 3000 MΩ min.
 Dielectric Withstanding Voltage : 500V AC for 1minute
 Operating Temperature : -40°C to +105°C

► Mating Suggestion : A33 series.



(TYPE A)

(TYPE B)



RECOMMENDED P.C.B. LAYOUT

POSITION	A	B	C
4	8.86	3.81	7.41
6	11.40	6.35	9.95
8	13.94	8.89	12.49
10	16.48	11.43	15.03
12	19.02	13.97	17.57
14	21.56	16.51	20.11
16	24.10	19.05	22.65
18	26.64	21.59	25.19
20	29.18	24.13	27.73
22	31.72	26.67	30.27
24	34.26	29.21	32.81
26	36.80	31.75	35.35

RECOMMENDED P.C.B. LAYOUT

How to order: A33b - 1 - 2 - 3 - 4 - 5 - G(RoHS)

1.NO. OF CONTACT	2.CONTACT MATERIAL	3.CONTACT PLATING	4.SPECIAL FUNCTION	5.INSULATOR COLOR
04 06 08 10 12 14 16 18 20 22 24 26	B: PHOSPHOR BRONZE	T: TIN PLATED S: SELECTIVE G: GOLD FLASH A: 5u" INCH GOLD B: 10u" INCH GOLD C: 15u" INCH GOLD D: 30u" INCH GOLD	A: TYPE A B: TYPE B	1. BLACK