

# A35 IDC SOCKET DUAL U-SLOT & DUAL CONTACT

**PITCH: 2.54mm \* 2.54mm**

## SPECIFICATIONS

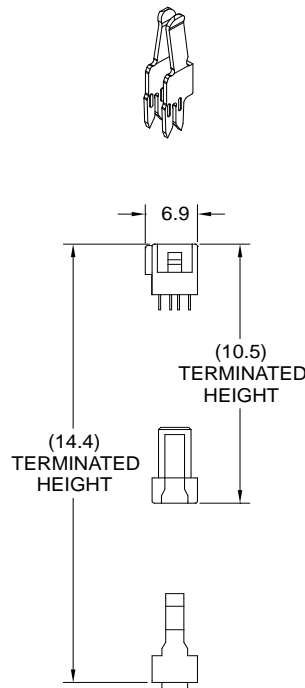
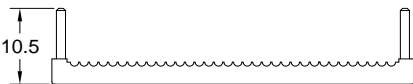
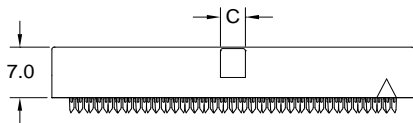
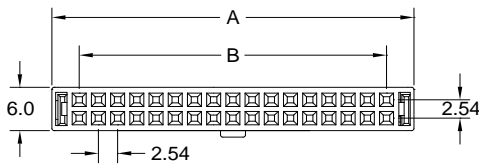
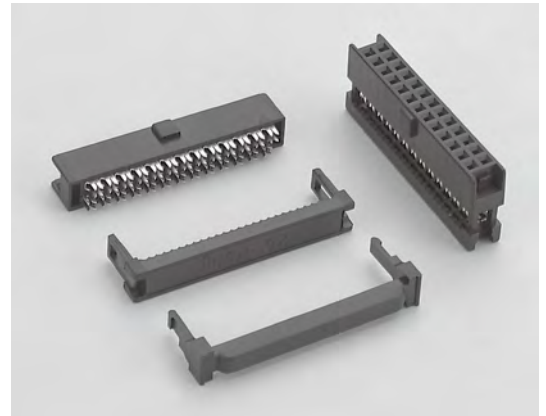
### Material

Insulator : PBT, glass reinforced, rated UL 94V-0  
 Contact : Phosphor Bronze

### Electrical

Current Rating : 1 Amp for # 28AWG Cable  
 1.5Amp for # 26AWG Cable  
 Contact Resistance : 30 mΩ max.  
 Insulation Resistance : 3000 MΩ min.  
 Dielectric Withstanding Voltage : 500V AC for 1minute  
 Operating Temperature : -40°C to +105°C

- ▶ Terminated with L01-1.27mm pitch flat ribbon cable.
- ▶ Mating Suggestion : C01b, C01f, C02b, C02c, C02d & C89 series.



POSITION	A	B	C
6	12.32	5.08	1.85
8	14.86	7.62	1.85
10	17.40	10.16	3.50
12	19.94	12.70	3.50
14	22.48	15.24	3.50
16	25.02	17.78	3.50
20	30.10	22.86	3.50
24	35.18	27.94	3.50
26	37.72	30.48	3.50
30	42.80	35.56	3.50
34	47.88	40.64	3.50
40	55.50	48.26	3.50
50	68.20	60.96	3.50
60	80.90	73.66	3.50
64	85.98	78.74	3.50



**How to order:** A35 - 1 - 2 - 3 - 4 - 5 - G(RoHS)

1.NO. OF CONTACT	2.CONTACT MATERIAL	3.CONTACT PLATING	4.SPECIAL FUNCTION	5.INSULATOR COLOR
06 08 10 12 14 16 20 24 26 30 34 40 50 60 64	B: PHOSPHOR BRONZE	T: TIN PLATED S: SELECTIVE G: GOLD FLASH A: 5u" INCH GOLD B: 10u" INCH GOLD C: 15u" INCH GOLD D: 30u" INCH GOLD	A: W STRAIN RELIEF W BAR B: W/O STRAIN RELIEF W BAR C: W STRAIN RELIEF W/O BAR D: W/O STRAIN RELIEF W/O BAR	1. BLACK



**DON CONNEX**  
ELECTRONICS CO., LTD

T:886 2 86483356 | F:886 2 86485885  
e-mail:info@donconnex.com.tw



Connector:E163339 | Flat cable:E162690  
Wiring Harnesses:E312257