

# A36 D-SUB IDC MALE DUAL U-SLOT

**PITCH: 2.77mm \* 2.84mm**

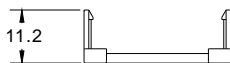
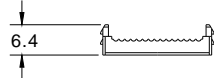
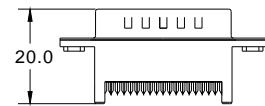
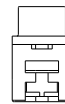
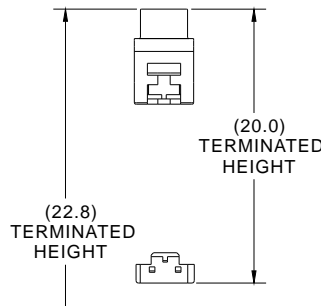
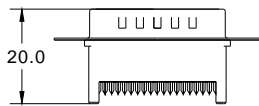
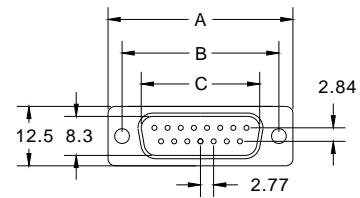
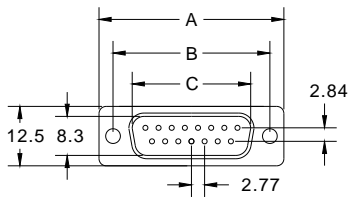
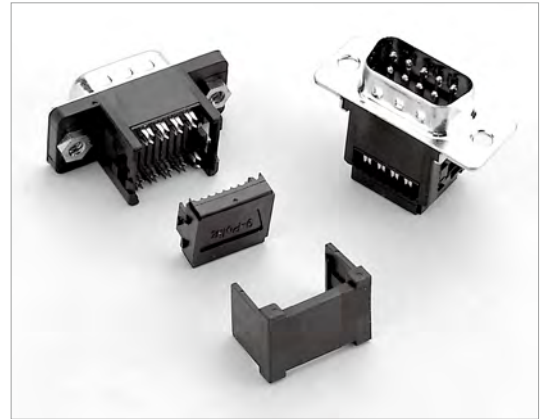
## SPECIFICATIONS

### Material

Insulator : PBT, glass reinforced, rated UL 94V-0  
 Contact : Phosphor Bronze

### Electrical

Current Rating : 1 Amp for # 28AWG Cable  
 1.5Amp for # 26AWG Cable  
 Contact Resistance : 30 mΩ max.  
 Insulation Resistance : 3000 MΩ min.  
 Dielectric Withstanding Voltage : 500V AC for 1minute  
 Operating Temperature : -40°C to +105°C  
 ▶ Terminated with L01-1.27mm pitch flat ribbon cable.  
 ▶ Mating Suggestion : A37 series.



POSITION	A	B	C
9	30.80	25.00	16.92
15	39.20	33.30	25.25
25	53.05	47.04	38.96
37	69.40	63.50	55.42

**How to order:** A36 - 1 - 2 - 3 - 4 - 5 - 6 - 7 - G(RoHS)

1.NO. OF CONTACT		2.CONTACT TYPE		3.CONTACT PLATING	
09 15 25 37		M: MALE		T: TIN PLATED S: SELECTIVE	
4.SHELL	5.MOUNTING METHOD	6.ACCESSORIES	7.INSULATOR COLOR	G: GOLD FLASH A: 5u" INCH GOLD B: 10u" INCH GOLD C: 15u" INCH GOLD D: 30u" INCH GOLD	
B: METAL	A: THROUGH HOLE B: THREAD INSERT 4-40 UNC C: THREAD INSERT M3	A: W STRAIN RELIEF B: W/O STRAIN RELIEF	1. BLACK 2. GREY 3. BLUE		