

A41 IDC TRANSITION PLUG (4 ROWS)

PITCH: 1.27mm * 2.54mm

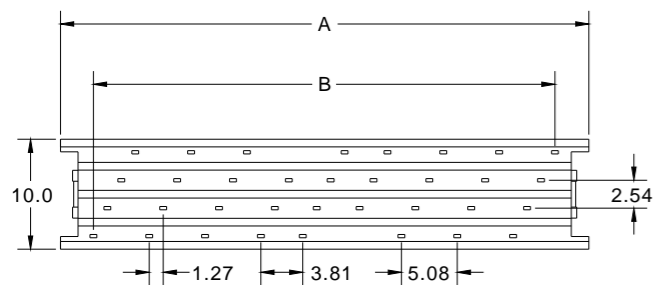
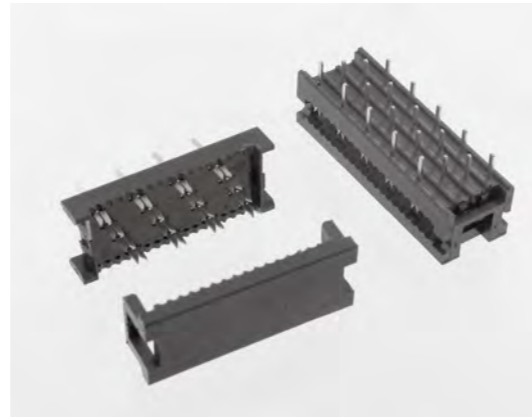
SPECIFICATIONS

Material

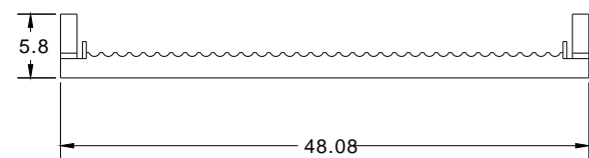
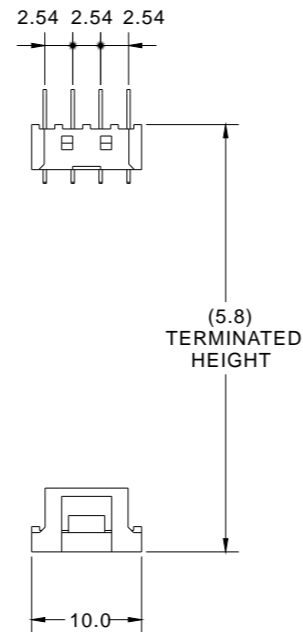
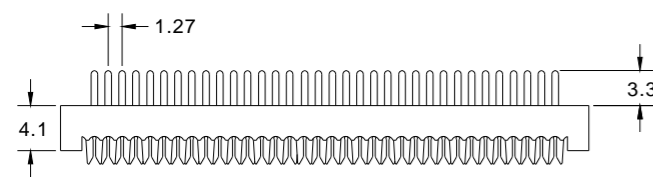
Insulator : PBT, glass reinforced, rated UL 94V-0
 Contact : Phosphor Bronze

Electrical

Current Rating : 1 Amp
 Contact Resistance : 30 mΩ max.
 Insulation Resistance : 3000 MΩ min.
 Dielectric Withstanding Voltage : 500V AC for 1minute
 Operating Temperature : -40°C to +105°C
 ▶ Terminated with L01-1.27mm pitch flat ribbon cable.

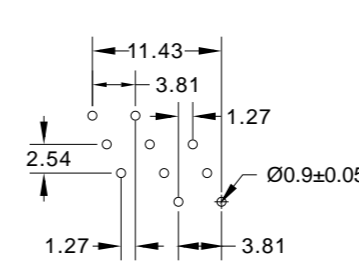


| POSITION | A | B |
|----------|-------|-------|
| 10 | 17.60 | 11.43 |
| 14 | 22.68 | 16.51 |
| 16 | 25.22 | 19.05 |
| 20 | 30.30 | 24.13 |
| 26 | 37.92 | 31.75 |
| 34 | 48.08 | 41.91 |
| 40 | 55.70 | 49.53 |
| 50 | 68.40 | 62.23 |
| 60 | 81.10 | 74.93 |
| 64 | 86.18 | 80.01 |

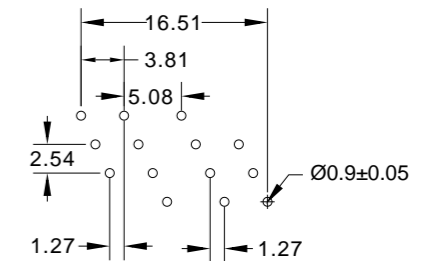


A41 IDC TRANSITION PLUG (4 ROWS)

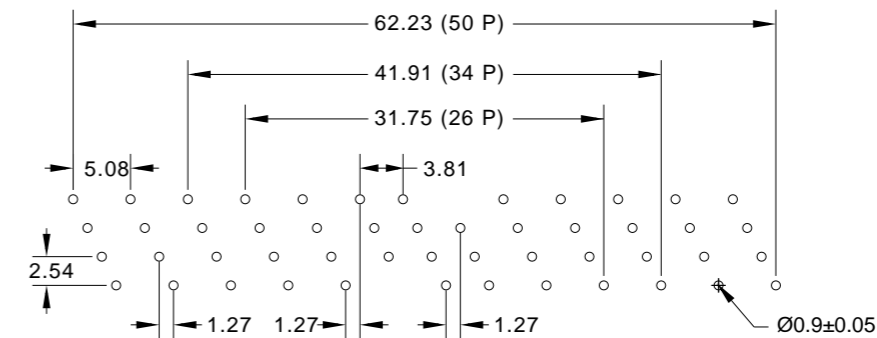
PITCH: 1.27mm * 2.54mm



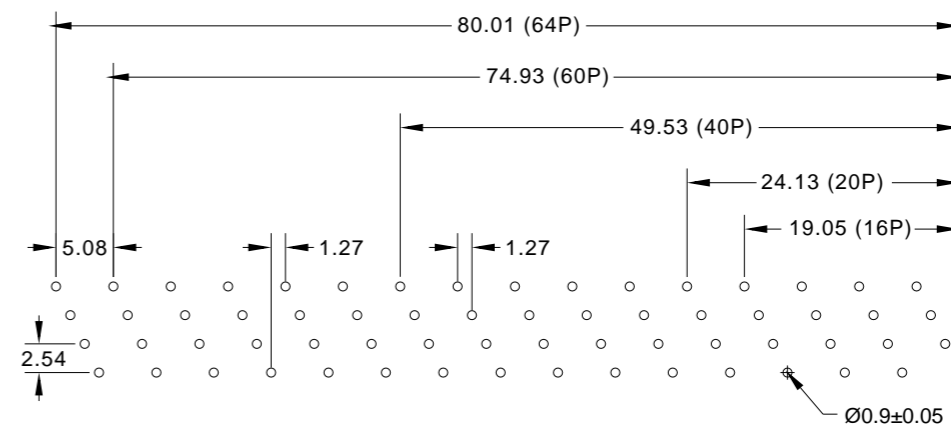
RECOMMENDED P.C.B LAYOUT FOR 10



RECOMMENDED P.C.B LAYOUT FOR 14



RECOMMENDED P.C.B LAYOUT FOR 26,34,50



RECOMMENDED P.C.B LAYOUT FOR 16,20,40,60,64

How to order: A41 - 1 - 2 - 3 - 4 - G(RoHS)

| 1.NO. OF CONTACT | 2.CONTACT MATERIAL | 3.CONTACT PLATING | 4.INSULATOR COLOR |
|----------------------------------|--------------------|---|-------------------|
| 10 14 16 20 26 34 40 50 60 64 | B: PHOSPHOR BRONZE | T: TIN PLATED S: SELECTIVE G: GOLD FLASH A: 5u" INCH GOLD B: 10u" INCH GOLD C: 15u" INCH GOLD D: 30u" INCH GOLD | 1. BLACK |