

A68 DIP PLUG PRESS-FIT TYPE (.1"*.1")

PITCH: 2.54mm * 2.54mm

SPECIFICATIONS

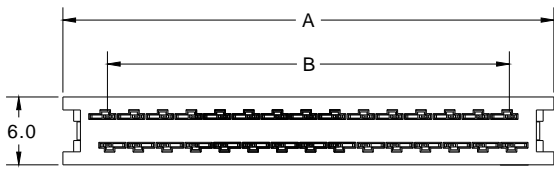
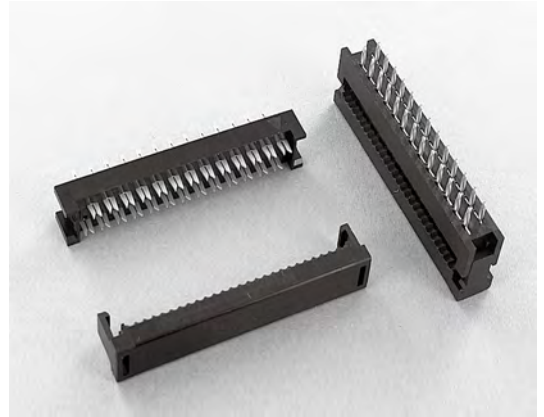
Material

Insulator : PBT, glass reinforced, rated UL 94V-0
 Contact : Phosphor Bronze

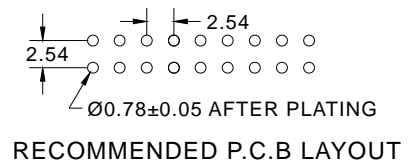
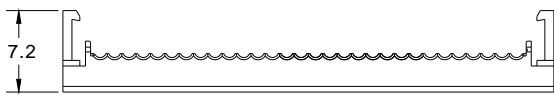
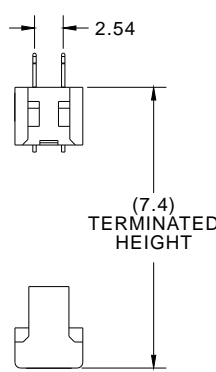
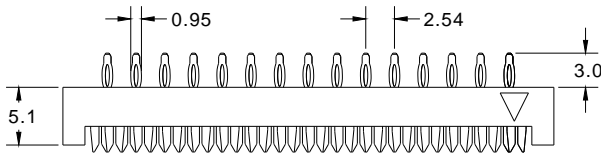
Electrical

Current Rating : 1 Amp
 Contact Resistance : 30 mΩ max.
 Insulation Resistance : 3000 MΩ min.
 Dielectric Withstanding Voltage : 500V AC for 1minute
 Operating Temperature : -40°C to +105°C

▶ Terminated with L01-1.27mm pitch flat ribbon cable.



POSITION	A	B
6	12.96	5.08
8	15.50	7.62
10	18.04	10.16
12	20.58	12.70
14	23.12	15.24
16	25.66	17.78
20	30.74	22.86
24	35.82	27.94
26	38.36	30.48
28	40.96	33.02
30	43.44	35.56
34	48.52	40.64
40	56.14	48.26
50	68.84	60.96
60	81.54	73.66
64	86.62	78.74



How to order: A68 - 1 - 2 - 3 - 4 - G(RoHS)

1.NO. OF CONTACT	2.CONTACT MATERIAL	3.CONTACT PLATING	4.INSULATOR COLOR
06 08 10 12 14 16 20 24 26 28 30 34 40 50 60 64	B: PHOSPHOR BRONZE	T: TIN PLATED S: SELECTIVE G: GOLD FLASH A: 5u" INCH GOLD B: 10u" INCH GOLD C: 15u" INCH GOLD D: 30u" INCH GOLD	1. BLACK