

A73 SLENDER DIP PLUG CLOSE END TYPE (.1" * .1")

PITCH: 2.54mm * 2.54mm

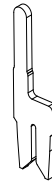
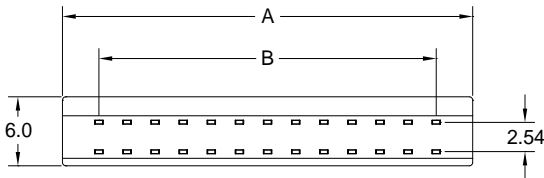
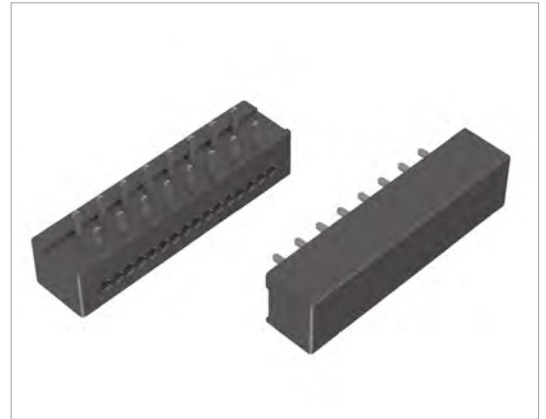
SPECIFICATIONS

Material

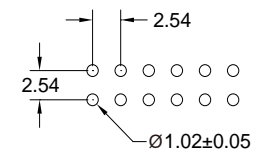
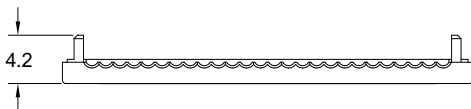
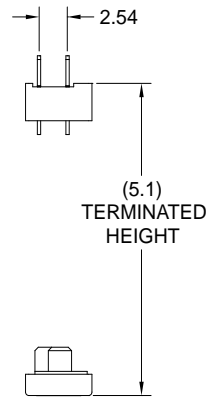
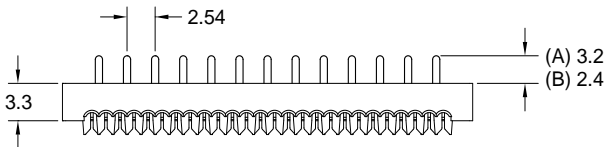
Insulator : PBT, glass reinforced, rated UL 94V-0
 Contact : Phosphor Bronze

Electrical

Current Rating : 1 Amp
 Contact Resistance : 30 mΩ max.
 Insulation Resistance : 3000 MΩ min.
 Dielectric Withstanding Voltage : 500V AC for 1minute
 Operating Temperature : -40°C to +105°C
 ▶ Terminated with L01-1.27mm pitch flat ribbon cable.



| POSITION | A | B |
|----------|-------|-------|
| 4 | 9.14 | 2.54 |
| 6 | 11.68 | 5.08 |
| 8 | 14.22 | 7.62 |
| 10 | 16.76 | 10.16 |
| 12 | 19.30 | 12.70 |
| 14 | 21.84 | 15.24 |
| 16 | 24.38 | 17.78 |
| 20 | 29.46 | 22.86 |
| 24 | 34.54 | 27.94 |
| 26 | 37.08 | 30.48 |
| 30 | 42.16 | 35.56 |
| 34 | 47.24 | 40.64 |
| 40 | 54.86 | 48.26 |



RECOMMENDED P.C.B LAYOUT

How to order: A73 - 1 - 2 - 3 - 4 - 5 - G(RoHS)

| 1.NO. OF CONTACT | 2.CONTACT MATERIAL | 3.CONTACT PLATING | 4. PIN LENGTH | 4.INSULATOR COLOR |
|--|--------------------|---|----------------------|-------------------|
| 04 06 08 10 12 14 16 20 24 26 30 34 40 | B: PHOSPHOR BRONZE | T: TIN PLATED S: SELECTIVE G: GOLD FLASH A: 5u" INCH GOLD B: 10u" INCH GOLD C: 15u" INCH GOLD D: 30u" INCH GOLD | A: 3.2mm B: 2.4mm | 1. BLACK |



DON CONNEX
ELECTRONICS CO., LTD

T:886 2 86483356 | F:886 2 86485885
e-mail: info@donconnex.com.tw



Connector: E163339 | Flat cable: E162690
Wiring Harnesses: E312257

