

B58 RIBBON TYPE FEMALE HEADER SMT TYPE

PITCH: 2.0mm * 2.0mm

SPECIFICATIONS

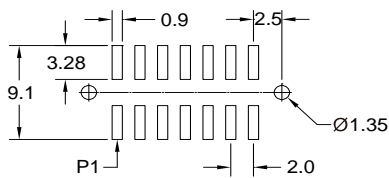
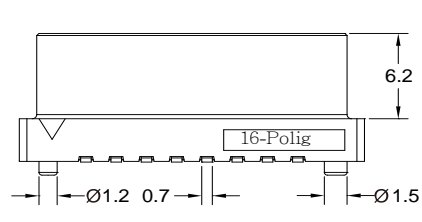
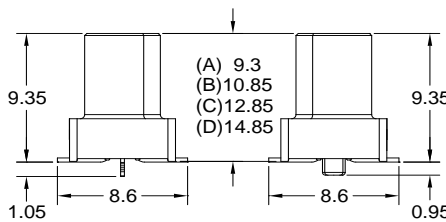
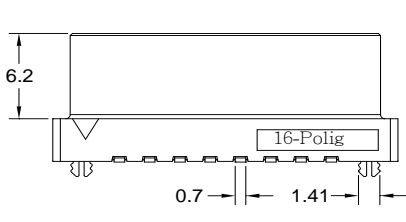
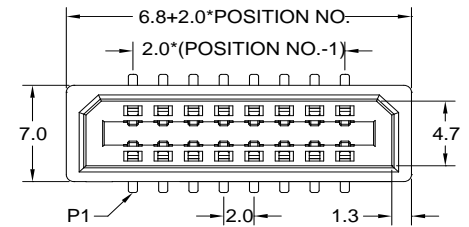
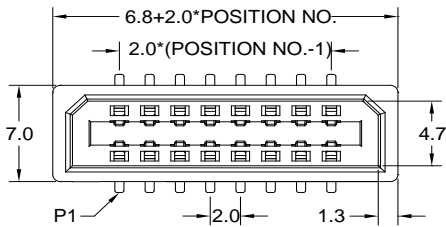
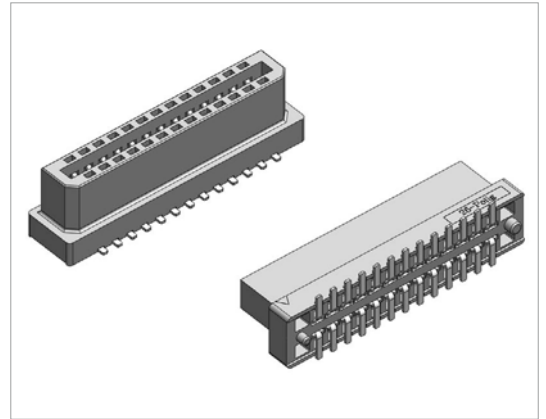
Material

Insulator : LCP, glass reinforced, rated UL 94V-0
 Contact : Phosphor Bronze

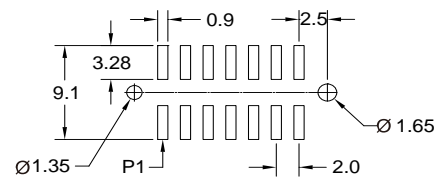
Electrical

Current Rating : 1 Amp
 Contact Resistance : 30 mΩ max.
 Insulation Resistance : 3000 MΩ min.
 Dielectric Withstanding Voltage : 500V AC for 1minute
 Operating Temperature : -40°C to +105°C

► Mating Suggestion: A74, C102 & C103 series.



RECOMMENDED P.C.B LAYOUT



RECOMMENDED P.C.B LAYOUT

How to order: B58 - 1 - 2 - 3 - 4 - 5 - 6 - 7 - G(RoHS)

1.NO. OF CONTACT		2.CONTACT MATERIAL		3.CONTACT PLATING	
06 08 10 12 14 16 20 22 24 26 30 34 40 44 50 68 80		B: PHOSPHOR BRONZE		T: TIN PLATED S: SELECTIVE G: GOLD FLASH	
4.INSULATOR HEIGHT	5.SPECIAL FUNCTION	6.PACKAGING	7. INSULATOR COLOR	A: 5u" INCH GOLD B: 10u" INCH GOLD C: 15u" INCH GOLD D: 30u" INCH GOLD	
A: 9.3mm B: 10.85mm C: 12.85mm D: 14.85mm	A: WITH PLASTIC LOCATING PEG B: W/O LOCATING PEG C: WITH METAL LOCKING CLIP	A:TUBE WITH PAD B: TUBE W/O PAD C: TAPE & REEL WITH PAD	1. BLACK		

