

B40a BINARY HEADER / SOCKET CONNECTOR R/A

PITCH: 2.0mm * 2.0mm

SPECIFICATIONS

Material

Insulator : LCP, glass reinforced, rated UL 94V-0

Contact : Brass

Electrical

Current Rating : 1 Amp

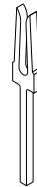
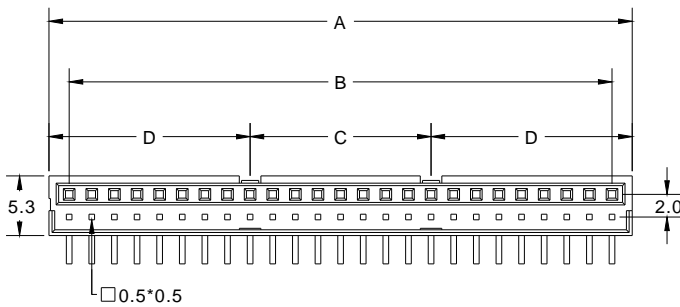
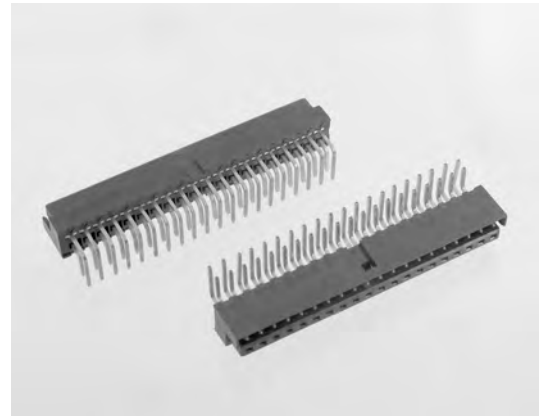
Contact Resistance : 30 mΩ max.

Insulation Resistance : 3000 MΩ min.

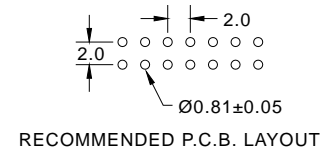
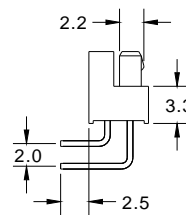
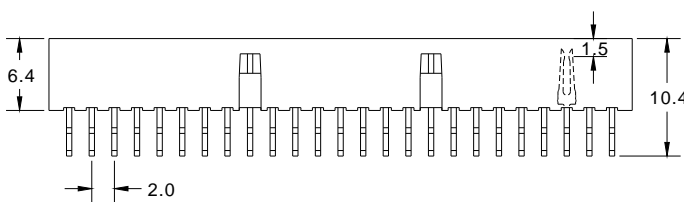
Dielectric Withstanding Voltage : 500V AC for 1minute

Operating Temperature : -40°C to +105°C

► Mating Suggestion : B40a(self-mating), B40, B40b & B40c series.



POSITION	A	B	C	D
10	11.57	8.00	0.00	5.78
20	21.57	18.00	0.00	10.78
30	31.57	28.00	0.00	15.78
40	41.57	38.00	0.00	20.78
50	51.57	48.00	16.00	17.78
60	61.57	58.00	18.00	21.78
80	81.57	78.00	20.00	30.78



How to order: B40a - 1 - 2 - 3 - 4 - G(RoHS)

1.NO. OF CONTACT	2.CONTACT MATERIAL	3.CONTACT PLATING	4.INSULATOR COLOR
10 20 30 40 50 60 80	A: BRASS	T: TIN PLATED S: SELECTIVE G: GOLD FLASH A: 5u" INCH GOLD B: 10u" INCH GOLD C: 15u" INCH GOLD D: 30u" INCH GOLD	1. BLACK

