

# B51b ELEVATED TRIPLE ROW FEMALE HEADER WITH SQUARE TAIL STR (H: 6.35mm)

**PITCH: 2.0mm \* 2.0mm**

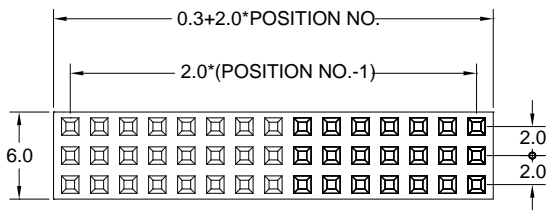
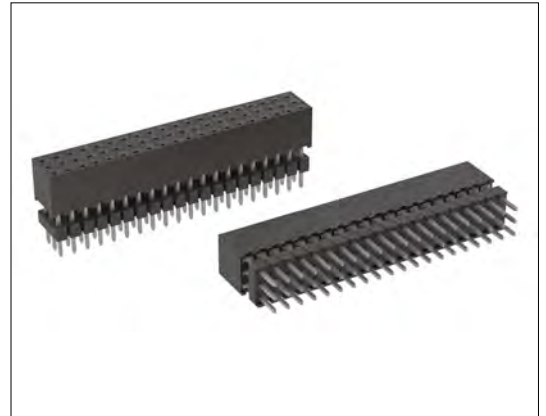
## SPECIFICATIONS

### Material

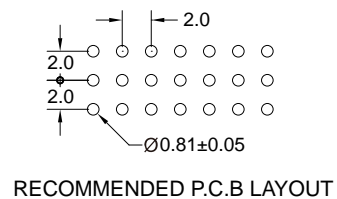
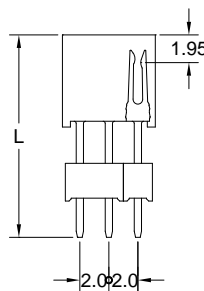
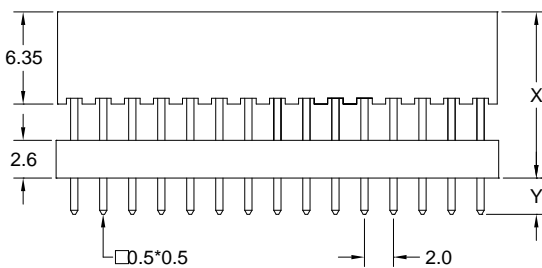
Insulator : LCP, glass reinforced, rated UL 94V-0  
 Contact : Phosphor Bronze

### Electrical

Current Rating : 1 Amp  
 Contact Resistance : 30 mΩ max.  
 Insulation Resistance : 3000 MΩ min.  
 Dielectric Withstanding Voltage : 500V AC for 1minute  
 Operating Temperature : -40°C to +105°C  
 ▶ Mating Suggestion : C21a & C22a series.



L	01	02	03	04	05
	11.02	12.35	15.02	18.35	19.02



**How to order:** B51b - 1 - 2 - 3 - 4 - 5 - G(RoHS)

1.NO. OF CONTACT	2.CONTACT MATERIAL	3.CONTACT PLATING	4.INSULATOR COLOR	5.LEAD STYLE
TRIPLE ROW 3*3 - 3*40	B: PHOSPHOR BRONZE	T: TIN PLATED S: SELECTIVE G: GOLD FLASH A: 5u" INCH GOLD B: 10u" INCH GOLD C: 15u" INCH GOLD D: 30u" INCH GOLD	1. BLACK	X / Y