

B59 RIBBON TYPE FEMALE HEADER STR

PITCH: 2.0mm*2.0mm

SPECIFICATIONS

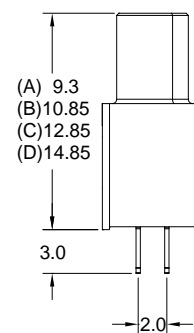
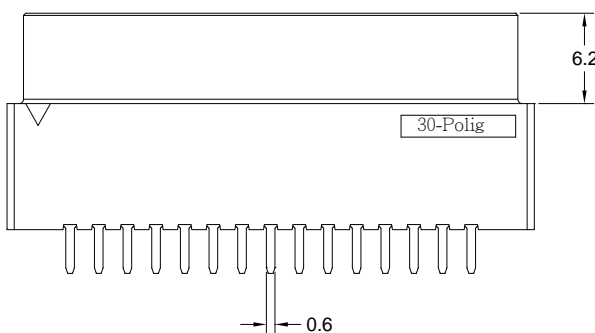
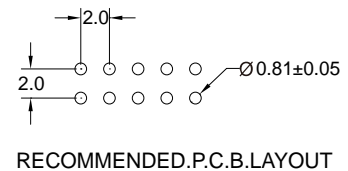
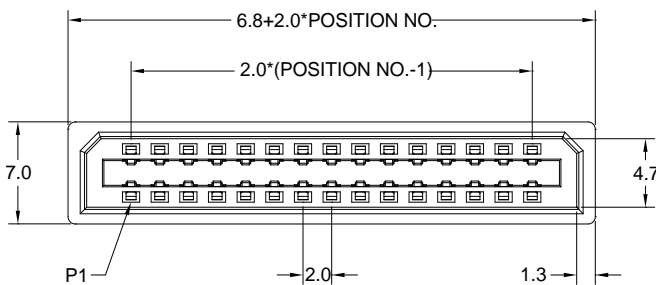
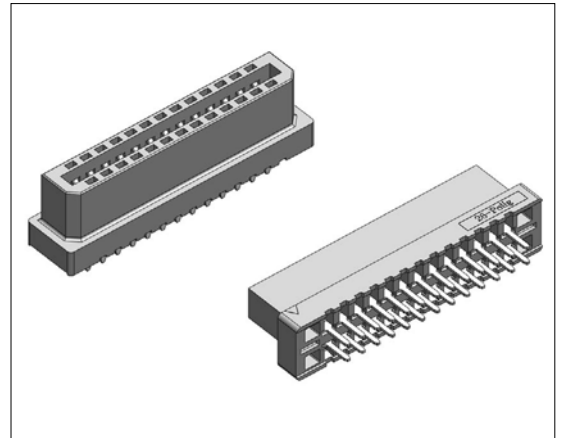
Material

Insulator: LCP, glass reinforced, rated UL 94V-0
 Contact: Phosphor Bronze

Electrical

Current Rating : 1 Amp
 Contact Resistance : 30 mΩ max.
 Insulation Resistance : 3000 MΩ min.
 Dielectric Withstanding Voltage : 500V AC for 1minute
 Operating Temperature : -40°C to +105°C

► Mating Suggestion: A74, C102 & C103 series.



How to order: B59 - 1 - 2 - 3 - 4 - 5 - G(RoHS)

1.NO. OF CONTACT	2.CONTACT MATERIAL	3.CONTACT PLATING	4. PIN LENGTH	5.INSULATOR COLOR
06 08 10 12 14 16 20 22 24 26 30 34 40 44 50 68 80	B: PHOSPHOR BRONZE	T: TIN PLATED S: SELECTIVE G: GOLD FLASH A: 5u" INCH GOLD B: 10u" INCH GOLD C: 15u" INCH GOLD D: 30u" INCH GOLD	A: 9.3mm B: 10.85mm C: 12.85mm D: 14.85mm	1. BLACK



DON CONNEX
ELECTRONICS CO., LTD

T:886 2 86483356 | F:886 2 86485885
e-mail: info@donconnex.com.tw



Connector:E163339 | Flat cable:E162690
Wiring Harnesses:E312257

