

B06g ELEVATED FEMALE HEADER WITH POLARIZATION BUMP WITH SQUARE TAIL STRAIGHT PROFILE: 8.4mm

PITCH: 2.54mm * 2.54mm

SPECIFICATIONS

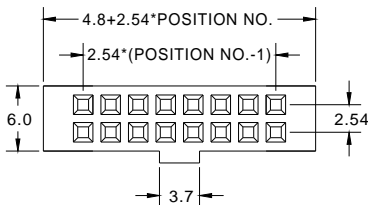
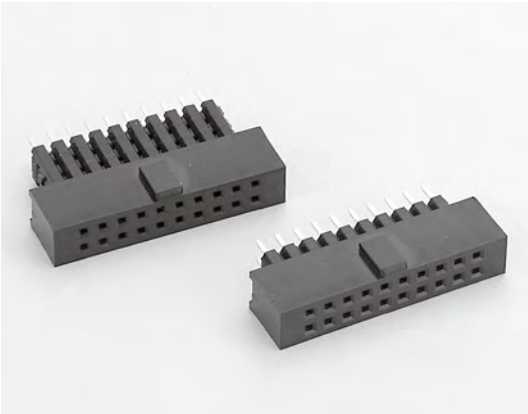
Material

Insulator : PBT, glass reinforced, rated UL 94V-0
 Contact : Brass

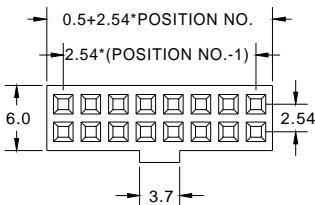
Electrical

Current Rating : 1 Amp
 Contact Resistance : 30 mΩ max.
 Insulation Resistance : 3000 MΩ min.
 Dielectric Withstanding Voltage : 500V AC for 1minute
 Operating Temperature : -40°C to +105°C

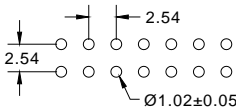
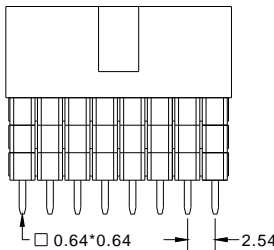
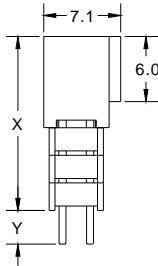
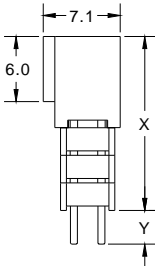
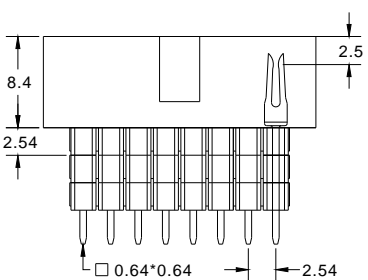
► Mating Suggestion : C03, C03b, C03c, C03e, C04, C04a, C04c & C04d series.



(TYPE A)

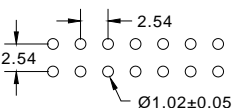


(TYPE B)



RECOMMENDED P.C.B LAYOUT

HEIGHT	X	Y
A	10.94	3.10
B	13.48	5.65
C	16.02	3.10



RECOMMENDED P.C.B LAYOUT

How to order: B06g - 1 - 2 - 3 - 4 - 5 - 6 - G(RoHS)

1.NO. OF CONTACT	2.CONTACT MATERIAL	3.CONTACT PLATING	4.INSULATOR TYPE	5.LEAD STYLE	6.INSULATOR COLOR
06 08 10 12 14 16 20 24 26 30 34 40 44 50 60 64	A: BRASS	T: TIN PLATED S: SELECTIVE G: GOLD FLASH A: 5u" INCH GOLD B: 10u" INCH GOLD C: 15u" INCH GOLD D: 30u" INCH GOLD	A: TYPE A B: TYPE B	A: TYPE A B: TYPE B C: TYPE C	1. BLACK