

B06h TRIPLE ROW FEMALE HEADER STRAIGHT PROFILE: 8.4mm

PITCH: 2.54mm * 2.54mm

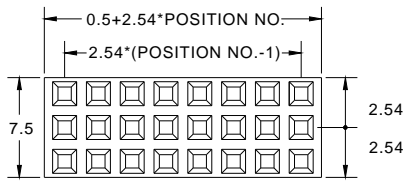
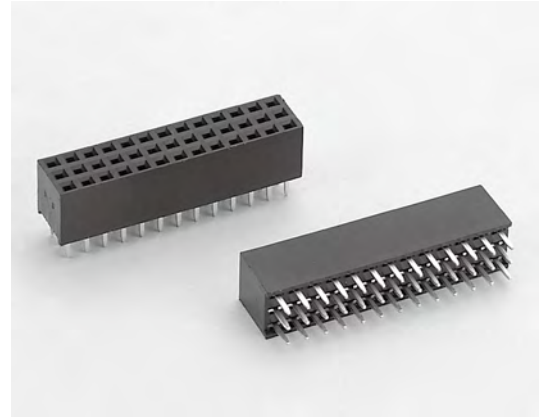
SPECIFICATIONS

Material

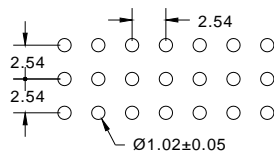
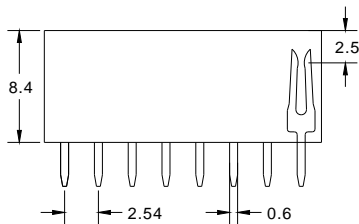
Insulator : PBT, glass reinforced, rated UL 94V-0
Contact : Phosphor Bronze or Brass

Electrical

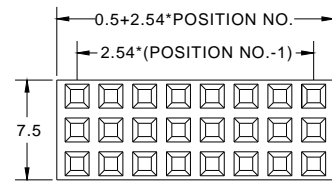
Current Rating : 1 Amp
Contact Resistance : 30 mΩ max.
Insulation Resistance : 3000 MΩ min.
Dielectric Withstanding Voltage : 500V AC for 1minute
Operating Temperature : -40°C to +105°C
▶ Mating Suggestion : C21 & C22 series.



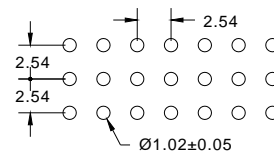
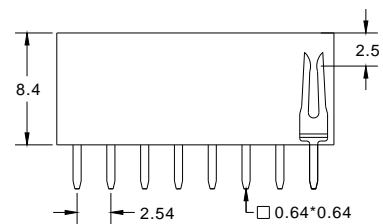
(TYPE A)



RECOMMENDED P.C.B LAYOUT



(TYPE B)



RECOMMENDED P.C.B LAYOUT

How to order: B06h - 1 - 2 - 3 - 4 - 5 - 6 - G(RoHS)

1.NO. OF CONTACT	2.CONTACT MATERIAL	3.CONTACT PLATING	4.PIN TYPE	5.PIN LENGTH	6.INSULATOR COLOR
TRIPLE ROW 3*3 - 3*40	A: BRASS B: PHOSPHOR BRONZE	T: TIN PLATED S: SELECTIVE G: GOLD FLASH A: 5u" INCH GOLD B: 10u" INCH GOLD C: 15u" INCH GOLD D: 30u" INCH GOLD	A: 0.6 * 0.4mm B: 0.64*0.64mm	A: 3.3mm B: 5.65mm C: 10.7mm	1. BLACK



DON CONNEX
ELECTRONICS CO., LTD

T:886 2 86483356 | F:886 2 86485885
e-mail: info@donconnex.com.tw



Connector:E163339 | Flat cable:E162690
Wiring Harnesses:E312257

