

B06i ELEVATED TRIPLE ROW FEMALE HEADER STRAIGHT PROFILE : 8.4mm

PITCH: 2.54mm * 2.54mm

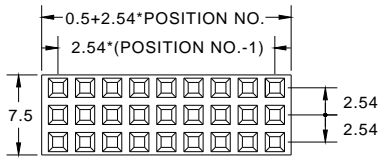
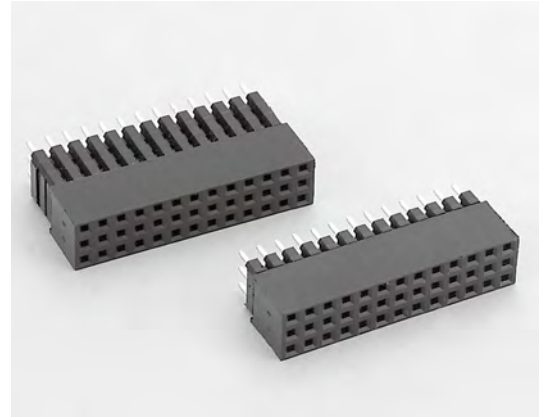
SPECIFICATIONS

Material

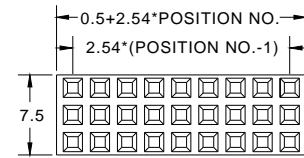
Insulator : PBT, glass reinforced, rated UL 94V-0
Contact : Phosphor Bronze or Brass

Electrical

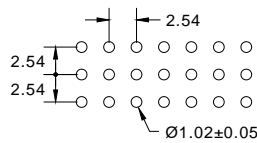
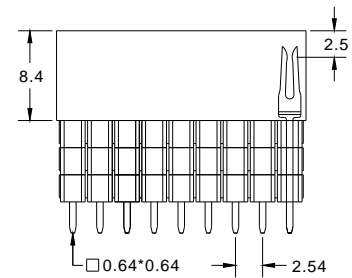
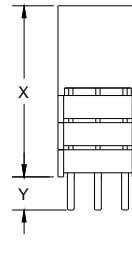
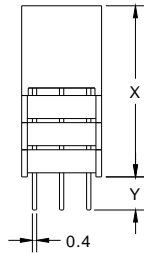
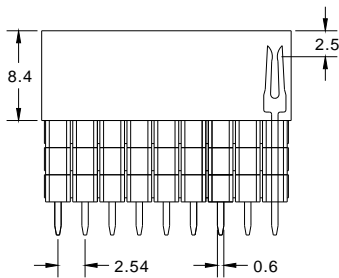
Current Rating : 1 Amp
Contact Resistance : 30 mΩ max.
Insulation Resistance : 3000 MΩ min.
Dielectric Withstanding Voltage : 500V AC for 1minute
Operating Temperature : -40°C to +105°C
▶ Mating Suggestion : C21 & C22 series.



(TYPE A)

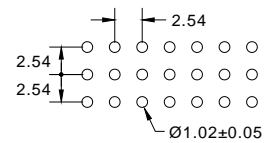


(TYPE B)



RECOMMENDED P.C.B LAYOUT

HEIGHT	X	Y
A	10.94	3.10
B	13.48	5.65
C	16.02	3.10



RECOMMENDED P.C.B LAYOUT

How to order: B06i - 1 - 2 - 3 - 4 - 5 - 6 - G(RoHS)

1.NO. OF CONTACT	2.CONTACT MATERIAL	3.CONTACT PLATING	4.PIN TYPE	5.LEAD STYLE	6.INSULATOR COLOR
TRIPLE ROW 3*3 - 3*40	A: BRASS B: PHOSPHOR BRONZE	T: TIN PLATED S: SELECTIVE G: GOLD FLASH A: 5u" INCH GOLD B: 10u" INCH GOLD C: 15u" INCH GOLD D: 30u" INCH GOLD	A: 0.6*0.4mm B: 0.64*0.64mm	A: TYPE A B: TYPE B C: TYPE C	1. BLACK

