

B07a FEMALE HEADER WITH POLARIZATION BUMP RIGHT ANGLE PROFILE : 8.4mm

PITCH: 2.54mm * 2.54mm

SPECIFICATIONS

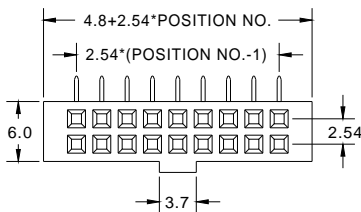
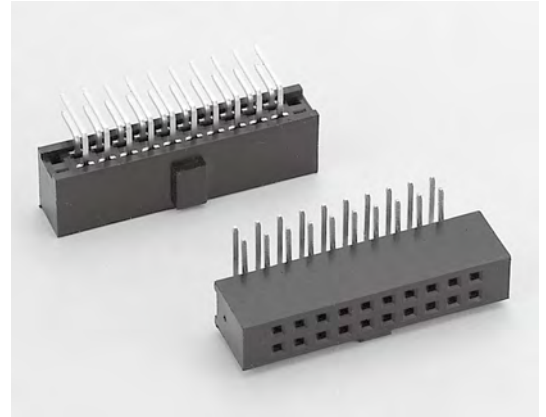
Material

Insulator : PBT, glass reinforced, rated UL 94V-0
Contact : Phosphor Bronze or Brass

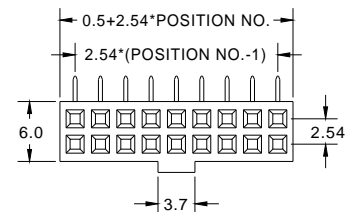
Electrical

Current Rating : 1 Amp
Contact Resistance : 30 mΩ max.
Insulation Resistance : 3000 MΩ min.
Dielectric Withstanding Voltage : 500V AC for 1minute
Operating Temperature : -40°C to +105°C

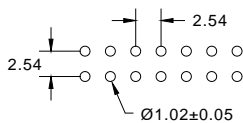
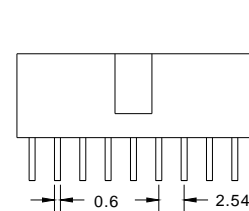
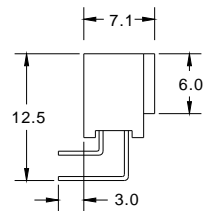
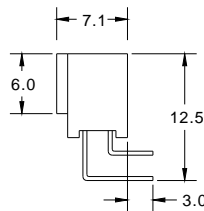
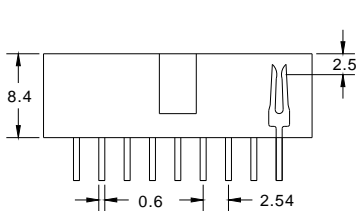
► Mating Suggestion : C03, C03b, C03c, C03e, C04, C04a, C04c & C04d series.



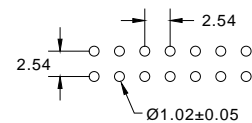
(TYPE A)



(TYPE B)



RECOMMENDED P.C.B LAYOUT



RECOMMENDED P.C.B LAYOUT

How to order: B07a - 1 - 2 - 3 - 4 - 5 - G(RoHS)

| 1.NO. OF CONTACT | 2.CONTACT MATERIAL | 3.CONTACT PLATING | 4.INSULATOR TYPE | 5.INSULATOR COLOR |
|--|--------------------------------|---|------------------------|-------------------|
| 06 08 10 12 14 16 20 24 26 30 34 40 44 50 60 64 | A: BRASS B: PHOSPHOR BRONZE | T: TIN PLATED S: SELECTIVE G: GOLD FLASH A: 5u" INCH GOLD B: 10u" INCH GOLD C: 15u" INCH GOLD D: 30u" INCH GOLD | A: TYPE A B: TYPE B | 1. BLACK |

