

B22 FEMALE HEADER WITH SQUARE TAIL STR (H: 11.0mm)

PITCH: 2.54mm & 2.54mm * 2.54mm

SPECIFICATIONS

Material

Insulator : PBT, glass reinforced, rated UL 94V-0

Contact : Brass

Electrical

Current Rating : 1 Amp

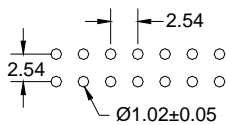
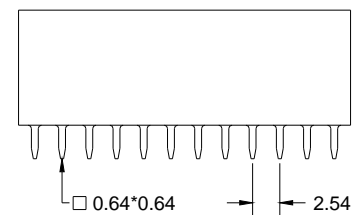
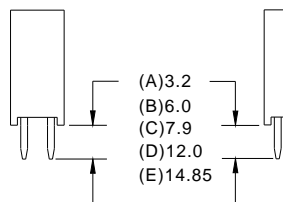
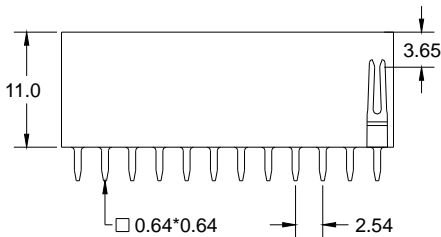
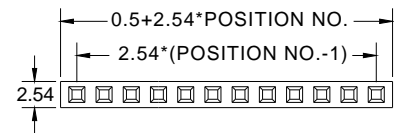
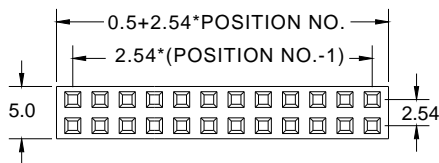
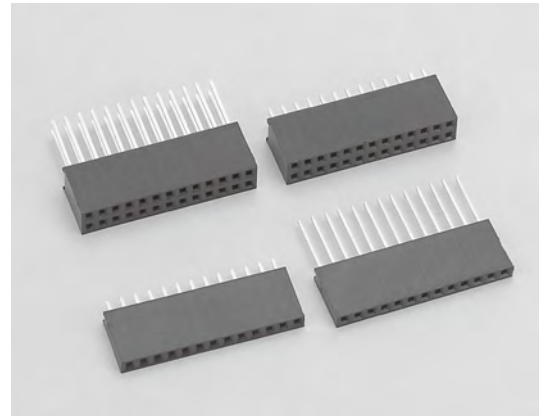
Contact Resistance : 30 mΩ max.

Insulation Resistance : 3000 MΩ min.

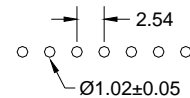
Dielectric Withstanding Voltage : 500V AC for 1minute

Operating Temperature : -40°C to +105°C

► Mating Suggestion : C15, C16, C17 & C18 series.



RECOMMENDED P.C.B. LAYOUT



RECOMMENDED P.C.B. LAYOUT

How to order: B22 - 1 - 2 - 3 - 4 - 5 - G(RoHS)

1.NO. OF CONTACT	2.CONTACT MATERIAL	3.CONTACT PLATING	4.PIN LENGTH	5.INSULATOR COLOR
SINGLE ROW 1*2 - 1 *40 DUAL ROW 2*2 - 2*40	A: BRASS	T: TIN PLATED S: SELECTIVE G: GOLD FLASH A: 5u" INCH GOLD B: 10u" INCH GOLD C: 15u" INCH GOLD D: 30u" INCH GOLD	A: 3.2mm B: 6.0mm C: 7.9mm D: 12.0mm E: 14.85mm	1. BLACK

