

B22d TRIPLE ROW FEMALE HEADER WITH SQUARE TAIL STR (H: 11.0mm)

PITCH: 2.54mm * 2.54mm

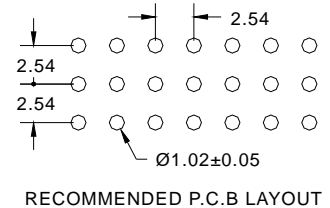
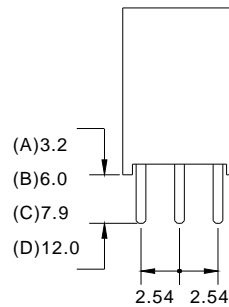
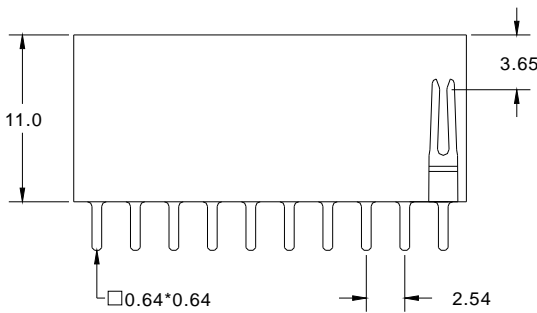
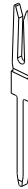
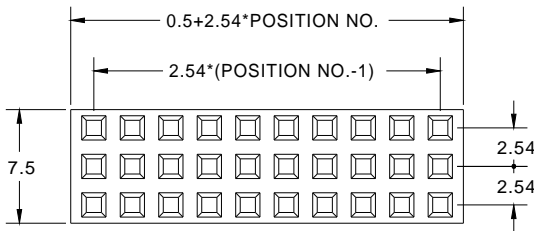
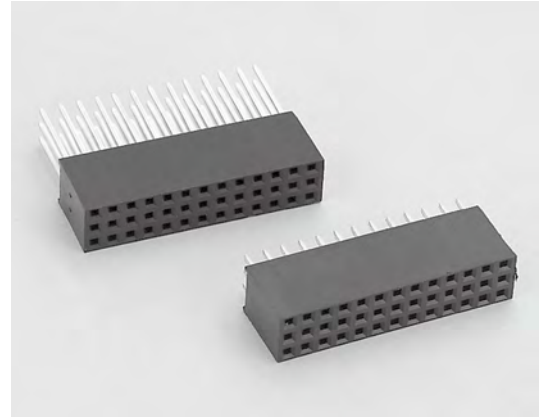
SPECIFICATIONS

Material

Insulator : PBT, glass reinforced, rated UL 94V-0
Contact : Brass

Electrical

Current Rating : 1 Amp
Contact Resistance : 30 mΩ max.
Insulation Resistance : 3000 MΩ min.
Dielectric Withstanding Voltage : 500V AC for 1minute
Operating Temperature : -40°C to +105°C
▶ Mating Suggestion : C21 & C22 series.



How to order: B22d - 1 - 2 - 3 - 4 - 5 - G(RoHS)

1.NO. OF CONTACT	2.CONTACT MATERIAL	3.CONTACT PLATING	4.PIN LENGTH	5.INSULATOR COLOR
TRIPLE ROW 3*3 - 3*40	A: BRASS	T: TIN PLATED S: SELECTIVE G: GOLD FLASH A: 5u" INCH GOLD B: 10u" INCH GOLD C: 15u" INCH GOLD D: 30u" INCH GOLD	A: 3.2mm B: 6.0mm C: 7.9mm D: 12.0mm	1. BLACK