

# B22e TRIPLE ROW ELEVATED FEMALE HEADER WITH SQUARE TAIL STR (H: 11.0mm)

**PITCH: 2.54mm \* 2.54mm**

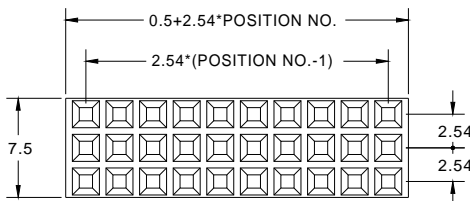
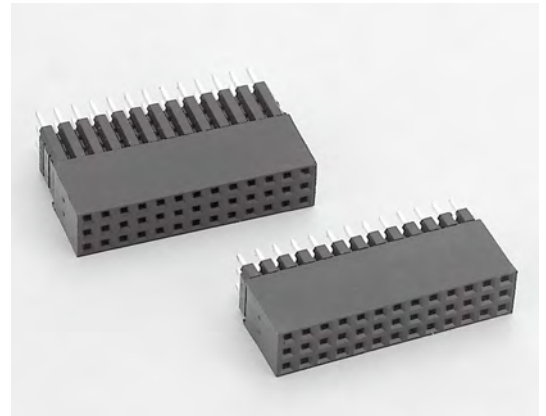
## SPECIFICATIONS

### Material

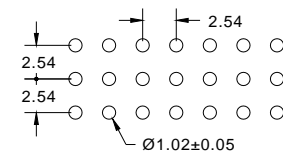
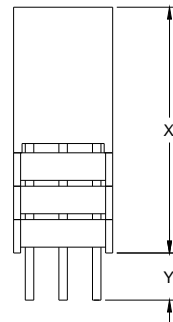
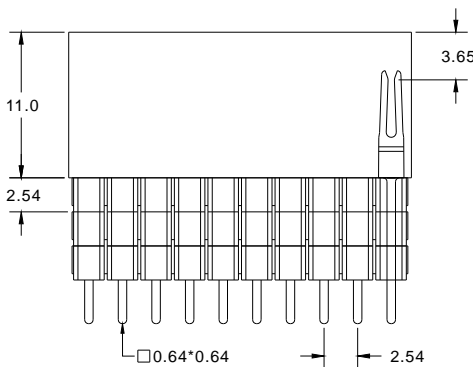
Insulator : PBT, glass reinforced, rated UL 94V-0  
 Contact : Brass

### Electrical

Current Rating : 1 Amp  
 Contact Resistance : 30 mΩ max.  
 Insulation Resistance : 3000 MΩ min.  
 Dielectric Withstanding Voltage : 500V AC for 1minute  
 Operating Temperature : -40°C to +105°C  
 ► Mating Suggestion : C21 & C22 series.



HEIGHT	X	Y
A	13.54	3.5
B	16.08	2.8
C	16.08	6.9
D	18.62	4.4



RECOMMENDED P.C.B LAYOUT

**How to order:** B22e - 1 - 2 - 3 - 4 - 5 - G(RoHS)

1.NO. OF CONTACT	2.CONTACT MATERIAL	3.CONTACT PLATING	4.LEAD STYLE	5.INSULATOR COLOR
TRIPLE ROW 3*3 - 3*40	A: BRASS	T: TIN PLATED S: SELECTIVE <b>G: GOLD FLASH</b> A: 5u" INCH GOLD B: 10u" INCH GOLD C: 15u" INCH GOLD D: 30u" INCH GOLD	A: TYPE A B: TYPE B C: TYPE C D: TYPE D	1. BLACK

