

B23a FEMALE HEADER WITH POLARIZATION BUMP STR (H: 5.0mm)

PITCH: 2.54mm * 2.54mm

SPECIFICATIONS

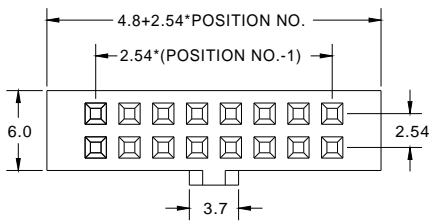
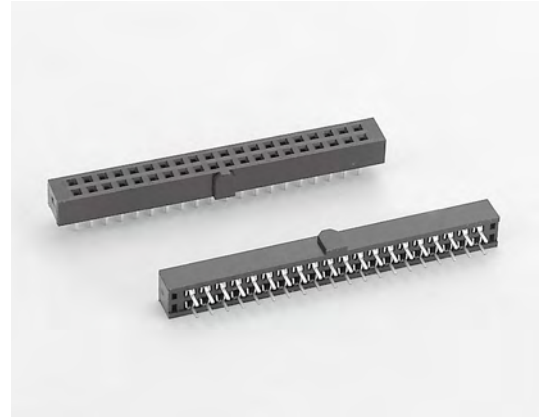
Material

Insulator : PBT, glass reinforced, rated UL 94V-0
 Contact : Phosphor Bronze

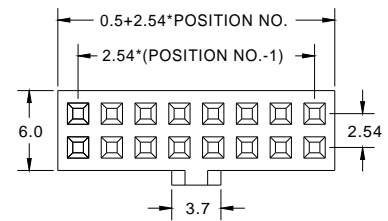
Electrical

Current Rating : 1 Amp
 Contact Resistance : 30 mΩ max.
 Insulation Resistance : 3000 MΩ min.
 Dielectric Withstanding Voltage : 500V AC for 1minute
 Operating Temperature : -40°C to +105°C

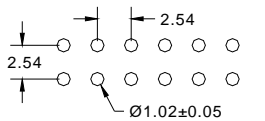
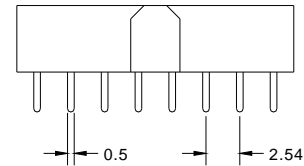
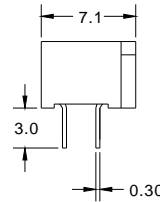
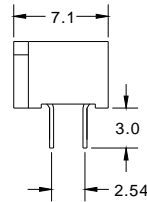
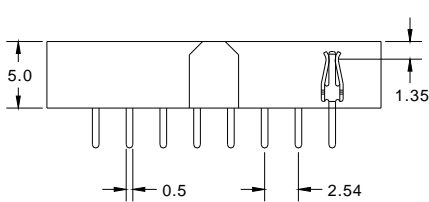
► Mating Suggestion : C03, C03b, C03c, C03e, C04 & C04a series.



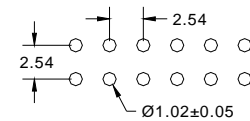
(TYPE A)



(TYPE B)



RECOMMENDED P.C.B. LAYOUT



RECOMMENDED P.C.B. LAYOUT

How to order: B23a - 1 - 2 - 3 - 4 - 5 - G(RoHS)

1.NO. OF CONTACT	2.CONTACT MATERIAL	3.CONTACT PLATING	4.INSULATOR TYPE	5.INSULATOR COLOR
06 08 10 12 14 16 20 24 26 30 34 40 44 50 60 64	B: PHOSPHOR BRONZE	T: TIN PLATED S: SELECTIVE G: GOLD FLASH A: 5u" INCH GOLD B: 10u" INCH GOLD C: 15u" INCH GOLD D: 30u" INCH GOLD	A: TYPE A B: TYPE B	1. BLACK

