

B25 DUAL ROW FEMALE HEADER DUAL ENTRY TYPE (H: 5.0mm)

PITCH: 2.54mm * 2.54mm

SPECIFICATIONS

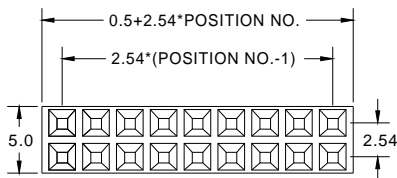
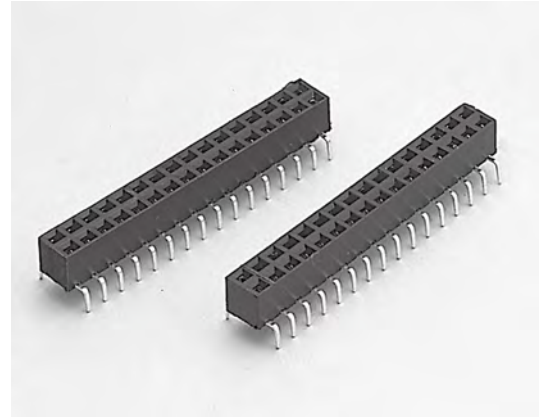
Material

Insulator : PBT, glass reinforced, rated UL 94V-0
Contact : Phosphor Bronze

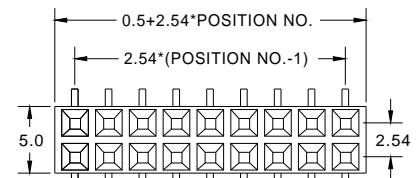
Electrical

Current Rating : 1 Amp
Contact Resistance : 30 mΩ max.
Insulation Resistance : 3000 MΩ min.
Dielectric Withstanding Voltage : 500V AC for 1minute
Operating Temperature : -40°C to +105°C

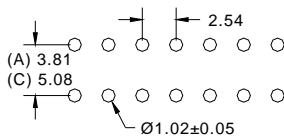
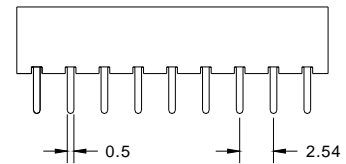
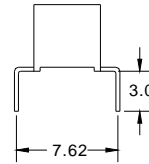
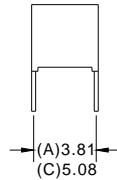
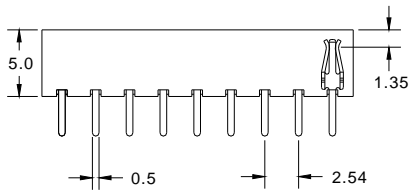
► Mating Suggestion : C17, C18 & C20 series.



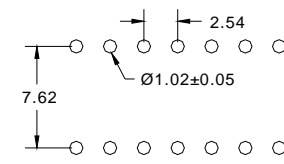
(TYPE A, C)



(TYPE B)



RECOMMENDED P.C.B LAYOUT



RECOMMENDED P.C.B LAYOUT

How to order: B25 - 1 - 2 - 3 - 4 - 5 - G(RoHS)

1.NO. OF CONTACT	2.CONTACT MATERIAL	3.CONTACT PLATING	4. FOOT RANK TYPE	5.INSULATOR COLOR
DUAL ROW 2*2 - 2*40	B: PHOSPHOR BRONZE	T: TIN PLATED S: SELECTIVE G: GOLD FLASH A: 5u" INCH GOLD B: 10u" INCH GOLD C: 15u" INCH GOLD D: 30u" INCH GOLD	A: 3.81mm B: 7.62mm C: 5.08mm	1. BLACK



DON CONNEX
ELECTRONICS CO., LTD

T:886 2 86483356 | F:886 2 86485885
e-mail: info@donconnex.com.tw



Connector:E163339 | Flat cable:E162690
Wiring Harnesses:E312257

