

B27g FEMALE HEADER WITH POLARIZATION BUMP SMT (H: 6.8mm)

PITCH: 2.54mm * 2.54mm

SPECIFICATIONS

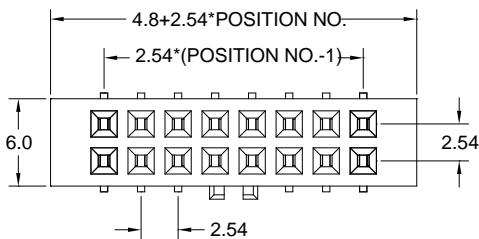
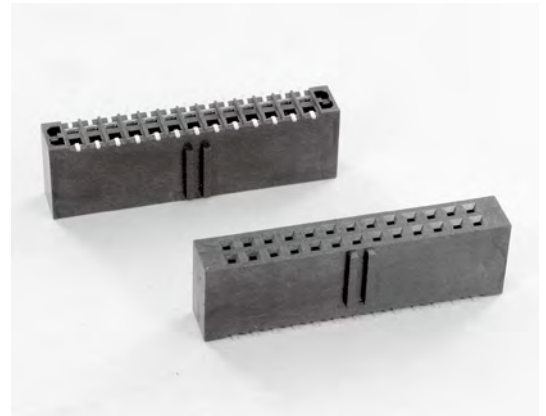
Material

Insulator : LCP, glass reinforced, rated UL 94V-0
 Contact : Phosphor Bronze

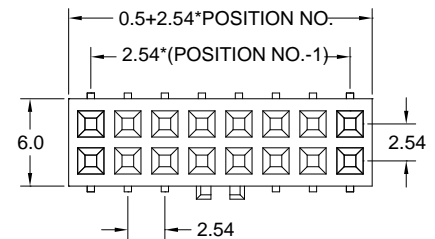
Electrical

Current Rating : 1 Amp
 Contact Resistance : 30 mΩ max.
 Insulation Resistance : 3000 MΩ min.
 Dielectric Withstanding Voltage : 500V AC for 1minute
 Operating Temperature : -40°C to +105°C

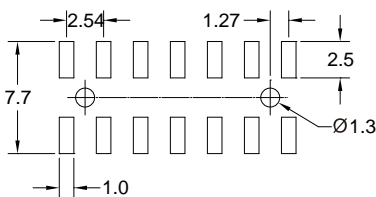
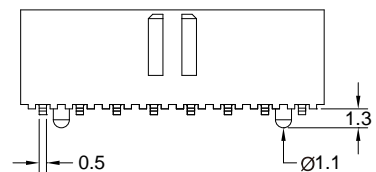
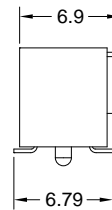
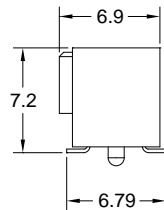
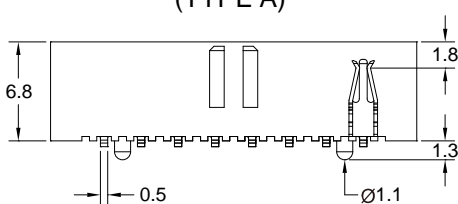
► Mating Suggestion : C03, C03b, C03c, C03e, C03d, C04, C04a, C04c & C04d series.



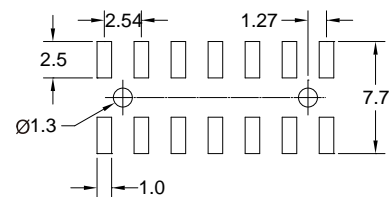
(TYPE A)



(TYPE B)



RECOMMENDED P.C.B LAYOUT



RECOMMENDED P.C.B LAYOUT



How to order: B27g - 1 - 2 - 3 - 4 - 5 - 6 - 7 - G(RoHS)

1.NO. OF CONTACT		2.CONTACT MATERIAL		3.CONTACT PLATING	
06 08 10 12 14 16 20 24 26 30 34 40 44 50 60 64		B: PHOSPHOR BRONZE		T: TIN PLATED S: SELECTIVE G: GOLD FLASH	
4.INSULATOR TYPE	5.SPECIAL FUNCTION	6.PACKAGING	7. INSULATOR COLOR	A: 5u" INCH GOLD B: 10u" INCH GOLD C: 15u" INCH GOLD D: 30u" INCH GOLD	
A: TYPE A B: TYPE B	A:WITH LOCATING PEG B:W/O LOCATING PEG	A:TUBE WITH PAD B: TUBE W/O PAD C: TAPE & REEL WITH PAD	1. BLACK		

