

B30b FEMALE HEADER WITH GUIDE SLOT STR (H: 11.0mm)

PITCH: 2.54mm * 2.54mm

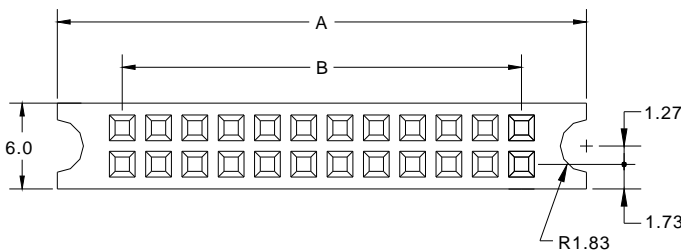
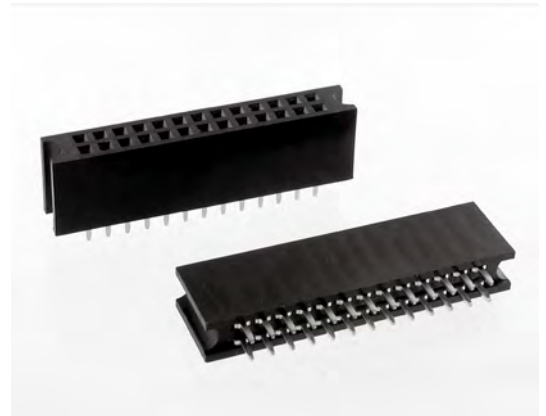
SPECIFICATIONS

Material

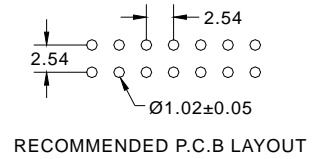
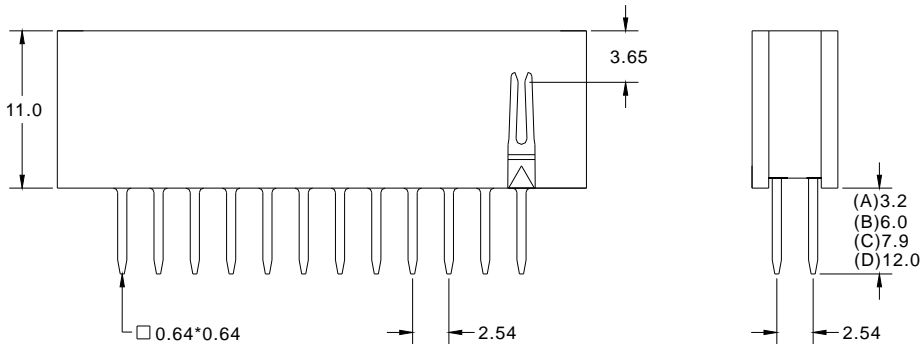
Insulator : PBT, glass reinforced, rated UL 94V-0
Contact : Brass

Electrical

Current Rating : 1 Amp
Contact Resistance : 30 mΩ max.
Insulation Resistance : 3000 MΩ min.
Dielectric Withstanding Voltage : 500V AC for 1minute
Operating Temperature : -40°C to +105°C
▶ Mating Suggestion : C95 & C95a series.



POSITION	A	B
6	14.17	5.08
8	16.71	7.62
10	19.25	10.16
12	21.79	12.70
14	24.33	15.24
16	26.87	17.78
20	31.95	22.86
24	37.03	27.94
26	39.57	30.48
30	44.65	35.56
34	49.73	40.64
36	52.27	43.18
40	57.35	48.26
44	62.43	53.34
50	70.05	60.96
60	82.75	73.66
64	87.83	78.74



How to order: B30b - 1 - 2 - 3 - 4 - 5 - G(RoHS)

1.NO. OF CONTACT	2.CONTACT MATERIAL	3.CONTACT PLATING	4.PIN LENGTH	5.INSULATOR COLOR
06 08 10 12 14 16 20 24 26 30 34 36 40 44 50 60 64	A: BRASS	T: TIN PLATED S: SELECTIVE G: GOLD FLASH A: 5u" INCH GOLD B: 10u" INCH GOLD C: 15u" INCH GOLD D: 30u" INCH GOLD	A: 3.2mm B: 6.0mm C: 7.9mm D: 12.0mm	1. BLACK

