

# B55 SINGLE ROW FEMALE HEADER DUAL ENTRY STR (H: 8.5mm)

**PITCH: 2.54mm**

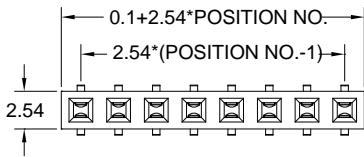
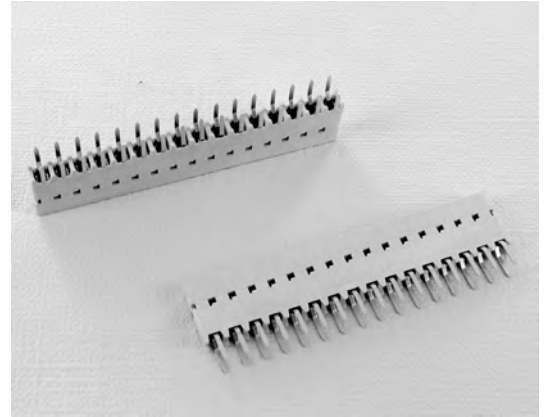
## SPECIFICATIONS

### Material

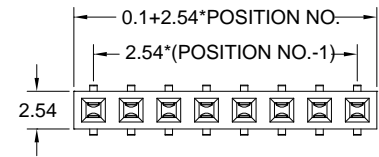
Insulator : LCP, glass reinforced, rated UL 94V-0  
Contact : Phosphor Bronze

### Electrical

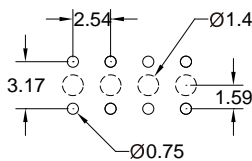
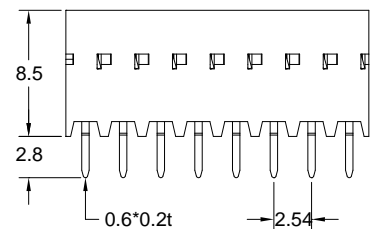
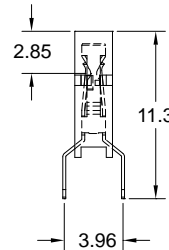
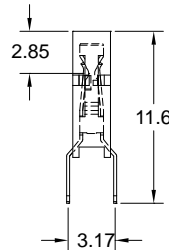
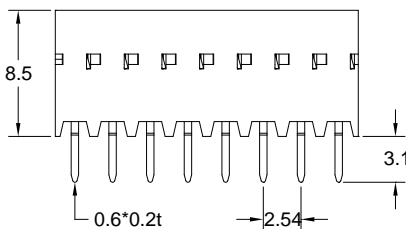
Current Rating : 1 Amp  
Contact Resistance : 30 mΩ max.  
Insulation Resistance : 3000 MΩ min.  
Dielectric Withstanding Voltage : 500V AC for 1minute  
Operating Temperature : -40°C to +105°C  
▶ Mating Suggestion : C15, C16, C19 & C23 series.



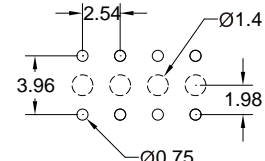
(TYPE A)



(TYPE B)



RECOMMENDED P.C.B LAYOUT



RECOMMENDED P.C.B LAYOUT

**How to order:** B55 - 1 - 2 - 3 - 4 - 5 - G(RoHS)

1.NO. OF CONTACT	2.CONTACT MATERIAL	3.CONTACT PLATING	4.FOOT PANK TYPE	5.INSULATOR COLOR
SINGLE ROW 1*2 - 1*40	B: PHOSPHOR BRONZE	T: TIN PLATED <b>S: SELECTIVE</b> G: GOLD FLASH A: 5u" INCH GOLD B: 10u" INCH GOLD C: 15u" INCH GOLD D: 30u" INCH GOLD	A: 3.17mm B: 3.96mm	9.IVORY

