

C44b HALF PITCH SHRUNK SHROUDED HEADER SMT

PITCH: 1.27mm * 1.27mm

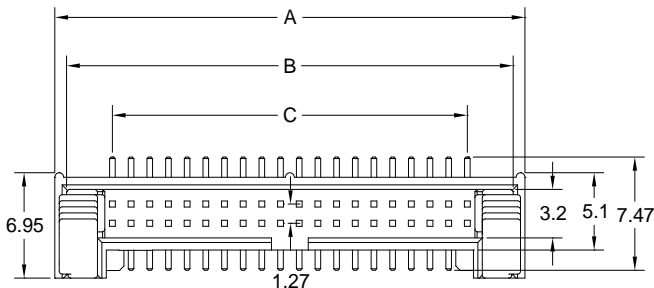
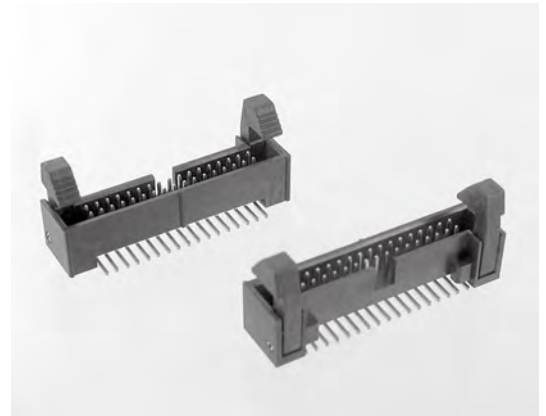
SPECIFICATIONS

Material

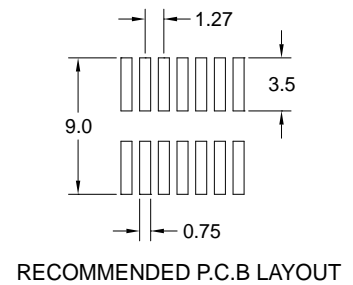
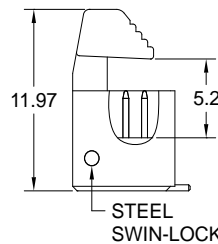
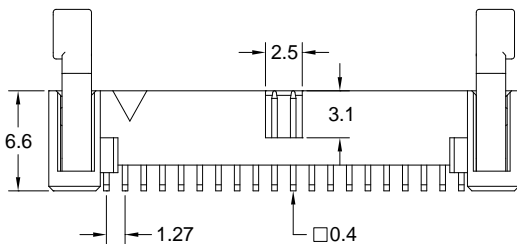
Insulator : LCP, glass reinforced, rated UL 94V-0
 Contact : Phosphor Bronze

Electrical

Current Rating : 1 Amp
 Contact Resistance : 30 mΩ max.
 Insulation Resistance : 1000 MΩ min.
 Dielectric Withstanding Voltage : 250V AC for 1minute
 Operating Temperature : -40°C to +105°C
 ► Mating Suggestion : A32, A32c & A52 series.



POSITION	A	B	C
6	10.37	8.77	2.54
8	11.64	10.04	3.81
10	12.91	11.31	5.08
12	14.18	12.58	6.35
14	15.45	13.85	7.62
16	16.72	15.12	8.89
20	19.26	17.66	11.43
22	20.53	18.93	12.70
26	23.07	21.47	15.24
30	25.61	24.01	17.78
34	28.15	26.55	20.32
40	31.96	30.36	24.13
44	34.50	32.90	26.67
50	38.31	36.71	30.48
60	44.66	43.06	36.83
68	49.74	48.14	41.91
80	57.36	55.76	49.53



How to order: C44b - 1 - 2 - 3 - 4 - 5 - G(RoHS)

1.NO. OF CONTACT	2.CONTACT MATERIAL	3.CONTACT PLATING	4.PACKAGING	5.INSULATOR COLOR
06 08 10 12 14 16 20 22 26 30 34 40 44 50 60 68 80	B: PHOSPHOR BRONZE	T: TIN PLATED S: SELECTIVE G: GOLD FLASH A: 5u" INCH GOLD B: 10u" INCH GOLD C: 15u" INCH GOLD D: 30u" INCH GOLD	A: TUBE WITH PAD B: TUBE W/O PAD C: TAPE & REEL WITH PAD	1. BLACK