

C91 SINGLE ROW HALF PITCH BOX HEADER SMT R/A

PITCH: 1.27mm

SPECIFICATIONS

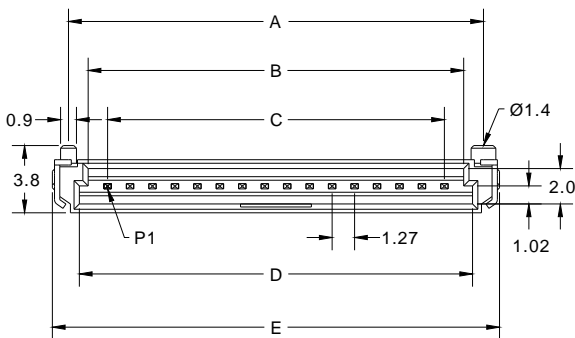
Material

Insulator : LCP, glass reinforced, rated UL 94V-0
 Contact : Phosphor Bronze

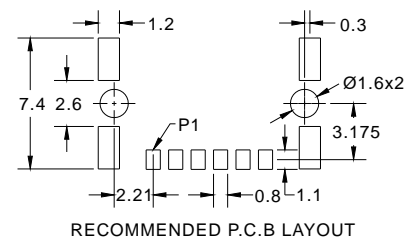
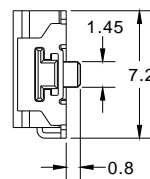
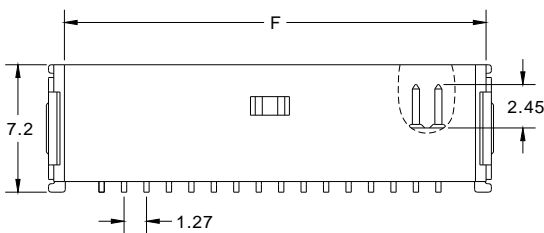
Electrical

Current Rating : 1 Amp
 Contact Resistance : 30 mΩ max.
 Insulation Resistance : 1000 MΩ min.
 Dielectric Withstanding Voltage : 250V AC for 1minute
 Operating Temperature : -40°C to +105°C

► Mating Suggestion : A54, A55 & B62 series.



POSITION	A	B	C	D	E	F
2	5.69	3.46	1.27	4.46	7.51	6.07
3	6.96	4.73	2.54	5.73	8.78	7.34
4	8.23	6.00	3.81	7.00	10.05	8.61
5	9.50	7.27	5.08	8.27	11.32	9.88
6	10.77	8.54	6.35	9.54	12.59	11.15
7	12.04	9.81	7.62	10.81	13.86	12.42
8	13.31	11.08	8.89	12.08	15.13	13.69
9	14.58	12.35	10.16	13.35	16.40	14.96
10	15.85	13.62	11.43	14.62	17.67	16.23
11	17.12	14.89	12.70	15.89	18.94	17.50
12	18.39	16.16	13.97	17.16	20.21	18.77
13	19.66	17.43	15.24	18.43	21.48	20.04
14	20.93	18.70	16.51	19.70	22.75	21.31
15	22.20	19.97	17.78	20.97	24.02	22.58
16	23.47	21.24	19.05	22.24	25.29	23.85
17	24.74	22.51	20.32	23.51	26.56	25.12
18	26.01	23.78	21.59	24.78	27.83	26.39
19	27.28	25.05	22.86	26.05	29.10	27.66
20	28.55	26.32	24.13	27.32	30.37	28.93



How to order: C91 - 1 - 2 - 3 - 4 - 5 - G(RoHS)

1.NO. OF CONTACT	2.CONTACT MATERIAL	3.CONTACT PLATING	4.PACKAGING	5.INSULATOR COLOR
02 03 04 05 06 07 08 09 10 11 12 13 14 15 16 17 18 19 20	B: PHOSPHOR BRONZE	T: TIN PLATED S: SELECTIVE G: GOLD FLASH A: 5u" INCH GOLD B: 10u" INCH GOLD C: 15u" INCH GOLD D: 30u" INCH GOLD	B: TUBE W/O PAD D: TAPE & REEL W/O PAD	1. BLACK



DON CONNEX
ELECTRONICS CO., LTD

T:886 2 86483356 | F:886 2 86485885
e-mail: info@donconnex.com.tw



Connector: E163339 | Flat cable: E162690
Wiring Harnesses: E312257

