

C93a HALF PITCH ELEVATED BOX HEADER SMT

PITCH: 1.27mm * 1.27mm

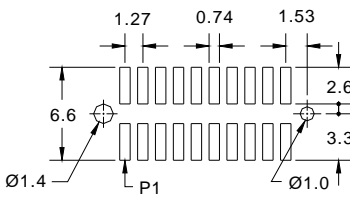
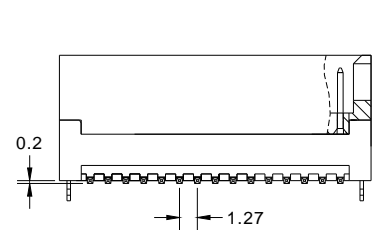
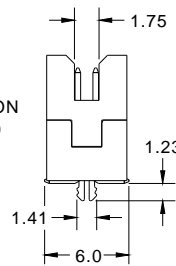
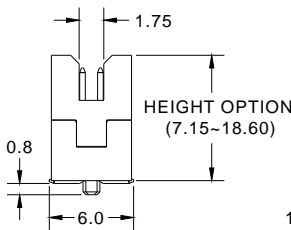
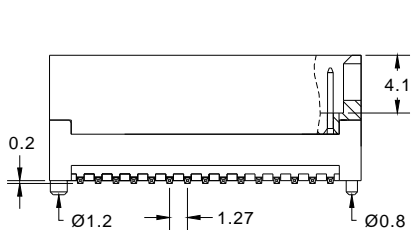
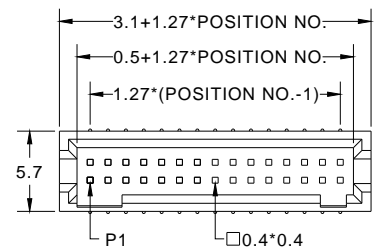
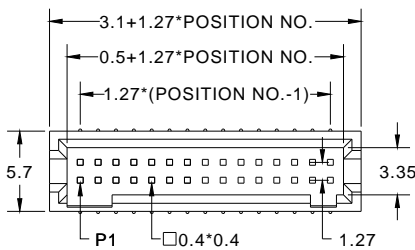
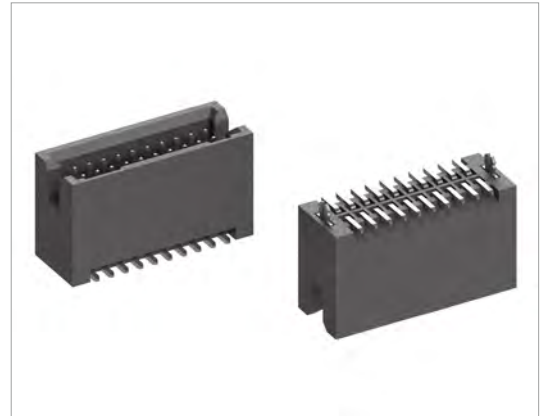
SPECIFICATIONS

Material

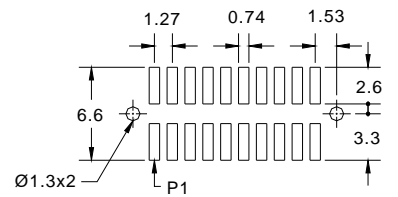
Insulator : LCP, glass reinforced, rated UL 94V-0
 Contact : Phosphor Bronze

Electrical

Current Rating : 1 Amp
 Contact Resistance : 30 mΩ max.
 Insulation Resistance : 1000 MΩ min.
 Dielectric Withstanding Voltage : 250V AC for 1minute
 Operating Temperature : -40°C to +105°C
 ► Mating Suggestion : A52a & B28 series.



RECOMMENDED P.C.B LAYOUT



RECOMMENDED P.C.B LAYOUT

How to order: C93a - 1 - 2 - 3 - 4 - 5 - 6 - 7 - G(RoHS)

1.NO. OF CONTACT		2.CONTACT MATERIAL		3.CONTACT PLATING	
08 TO 100		B: PHOSPHOR BRONZE		T: TIN PLATED S: SELECTIVE G: GOLD FLASH	
4. LOCATING PEG	5.PACKAGING	6. INSULATOR COLOR	7. INSULATOR HEIGHT	A: 5u" INCH GOLD B: 10u" INCH GOLD C: 15u" INCH GOLD D: 30u" INCH GOLD	
A: W/O LOCATING PEG B: W PLASTIC LOCATING PEG C: W METAL LOCKING CLIP	A:TUBE WITH PAD B: TUBE W/O PAD C: TAPE & REEL WITH PAD	1. BLACK	7.15mm ~ 18.60mm		