

# C55 FINE PITCH BOX HEADER SMT

**PITCH: 1.27mm \* 2.54mm**

## SPECIFICATIONS

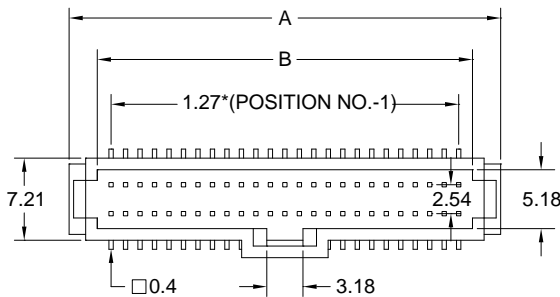
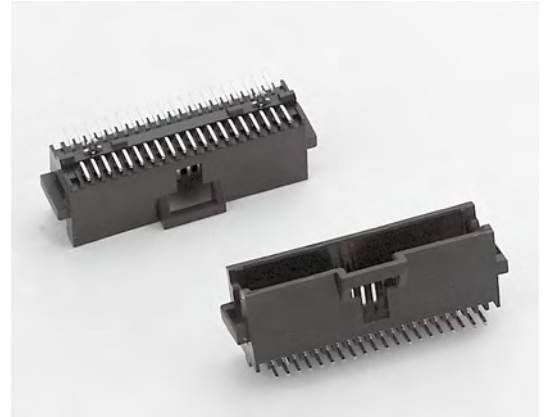
### Material

Insulator : LCP, glass reinforced, rated UL 94V-0  
 Contact : Phosphor Bronze

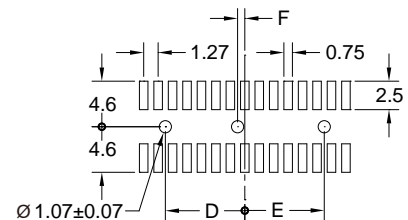
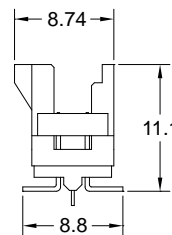
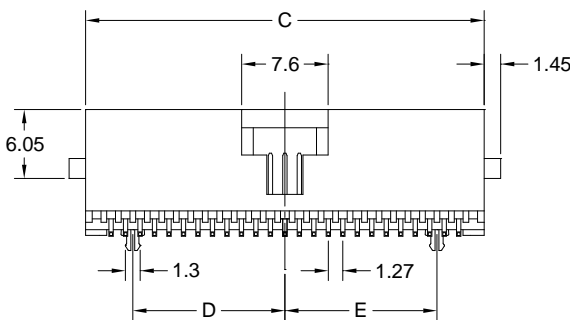
### Electrical

Current Rating : 1 Amp  
 Contact Resistance : 30 mΩ max.  
 Insulation Resistance : 1000 MΩ min.  
 Dielectric Withstanding Voltage : 250V AC for 1minute  
 Operating Temperature : -40°C to +105°C

► Mating Suggestion : A06, A63 & B15c series.



POSITION	A	B	C	D	E	F
10	12.54	7.59	9.64	0.635	--	--
14	15.08	10.13	12.18	1.905	--	--
16	16.35	11.40	13.45	2.54	2.54	--
20	18.89	13.94	15.99	3.81	3.81	--
24	21.43	16.48	18.53	5.08	5.08	--
26	22.70	17.75	19.80	5.715	5.715	--
30	25.24	20.29	22.34	6.985	6.985	--
34	27.78	22.83	24.88	8.255	8.255	--
40	31.59	26.64	28.89	10.16	10.16	--
44	34.13	29.18	31.23	11.43	11.43	--
50	37.94	32.99	35.04	13.335	13.335	--
60	44.29	39.34	41.39	16.51	16.51	0.00
64	46.83	41.88	43.93	17.78	17.78	0.00
68	49.37	44.42	46.47	19.05	19.05	0.00
72	51.91	46.96	49.01	20.32	20.32	0.00
80	56.99	52.04	54.09	22.86	22.86	0.00
100	69.96	65.01	66.79	29.21	29.21	0.00



RECOMMENDED P.C.B LAYOUT

**How to order:** C55 - 1 - 2 - 3 - 4 - 5 - G(RoHS)

1.NO. OF CONTACT	2.CONTACT MATERIAL	3.CONTACT PLATING	4.PACKAGING	5.INSULATOR COLOR
10 14 16 20 24 26 30 34 40 44 50 60 64 68 72 80 100	B: PHOSPHOR BRONZE	T: TIN PLATED S: SELECTIVE G: GOLD FLASH A: 5u" INCH GOLD B: 10u" INCH GOLD C: 15u" INCH GOLD D: 30u" INCH GOLD	A: TUBE WITH PAD B: TUBE W/O PAD C: TAPE & REEL WITH PAD	1. BLACK



**DON CONNEX**  
ELECTRONICS CO., LTD

T:886 2 86483356 | F:886 2 86485885  
e-mail: info@donconnex.com.tw



Connector: E163339 | Flat cable: E162690  
Wiring Harnesses: E312257

